

Anti-ANXA1 antibody (10-90) (STJ91600)

STJ91600

GENERAL INFORMATION

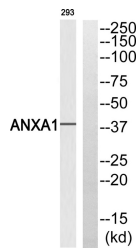
Product Type	Primary antibodies
Short Description	Rabbit polyclonal antibody anti-Annexin A1 (10-90) is suitable for use in Western Blot and ELISA research applications.
Applications	WB, ELISA
Host/Source	Rabbit
Reactivity	Human, Rat, Mouse

PRODUCT PROPERTIES

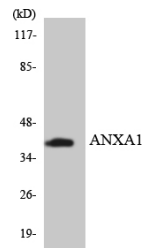
Clonality	Polyclonal
Clone ID	
Concentration	1 mg/mL
Conjugation	Unconjugated
Purification	The antibody was affinity-purified from rabbit anti-serum by affinity-chromatography.
Dilution Range	WB 1:500-1:2000 ELISA 1:10000
Formulation	PBS, 50% Glycerol, 0.5% BSA and 0.02% Sodium Azide.
Isotype	IgG
Storage Instruction	Store at -20°C for up to 1 year from the date of receipt, and avoid repeat freeze-thaw cycles.

TARGET INFORMATION

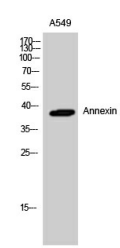
Gene ID	301
Gene Symbol	ANXA1
Uniprot ID	ANXA1_HUMAN
Immunogen	The antiserum was produced against synthesized peptide derived from human ANXA1 at amino acid range 15-64
Immunogen Region	10-90
Specificity	ANXA1 polyclonal antibody (Annexin A1) binds to endogenous Annexin A1 at the amino acid region 10-90.
Immunogen Sequence	



Western blot analysis of ANXA1 Antibody. The lane on the right is blocked with the ANXA1 peptide.



Western blot analysis of the lysates from HepG2 cells using ANXA1 antibody.



Western blot analysis of A549 cells using Annexin I Polyclonal Antibody diluted at 1: 2000

This product is suitable for in-vitro studies under the RESEARCH USE ONLY [RUO] licence. This product must not be used as for diagnostic or other medical purposes.
St John's Laboratory Ltd, Knowledge Dock Business Centre, University Way, London, E16 2RD | Tel: 0208 223 3081