

Anti-NUSAP1 antibody (370-450 C-Term) (STJ91598)

STJ91598

GENERAL INFORMATION

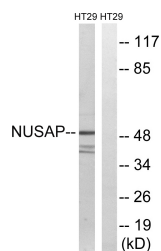
Product Type	Primary antibodies
Short Description	Rabbit polyclonal antibody anti-Nucleolar And Spindle-Associated Protein 1 (370-450 C-Term) is suitable for use in Western Blot and ELISA research applications.
Applications	WB, ELISA
Host/Source	Rabbit
Reactivity	Human, Rat, Mouse

PRODUCT PROPERTIES

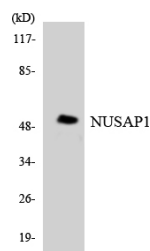
Clonality	Polyclonal
Clone ID	
Concentration	1 mg/mL
Conjugation	Unconjugated
Purification	The antibody was affinity-purified from rabbit anti-serum by affinity-chromatography.
Dilution Range	WB 1:500-1:2000 ELISA 1:20000
Formulation	PBS, 50% Glycerol, 0.5% BSA and 0.02% Sodium Azide.
Isotype	IgG
Storage	Store at -20°C for up to 1 year from the date of receipt, and avoid repeat freeze-thaw cycles.
Instruction	

TARGET INFORMATION

Gene ID	51203
Gene Symbol	NUSAP1
Uniprot ID	NUSAP_HUMAN
Immunogen	The antiserum was produced against synthesized peptide derived from human NUSAP1 at amino acid range 392-441
Immunogen Region	370-450 C-Term
Specificity	NUSAP1 polyclonal antibody (Nucleolar And Spindle-Associated Protein 1) binds to endogenous Nucleolar And Spindle-Associated Protein 1 at the amino acid region 370-450 C-Term.
Immunogen Sequence	



Western blot analysis of lysates from HT-29 cells, using NUSAP1 Antibody. The lane on the right is blocked with the synthesized peptide.



Western blot analysis of the lysates from HT-29 cells using NUSAP1 antibody.



Western blot analysis of various cells using ANKT Polyclonal Antibody