

Anti-AMOTL1 antibody (410-490 Internal) (STJ91593)

STJ91593

GENERAL INFORMATION

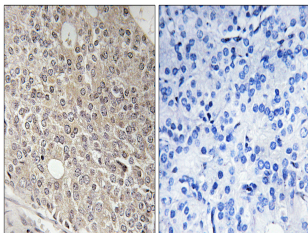
Product Type	Primary antibodies
Short Description	Rabbit polyclonal antibody anti-Angiotenin-Like Protein 1 (410-490 Internal) is suitable for use in Immunohistochemistry, Immunofluorescence and ELISA research applications.
Applications	IHC-P, IF-P, ELISA
Host/Source	Rabbit
Reactivity	Human, Mouse

PRODUCT PROPERTIES

Clonality	Polyclonal
Clone ID	
Concentration	1 mg/mL
Conjugation	Unconjugated
Purification	The antibody was affinity-purified from rabbit anti-serum by affinity-chromatography.
Dilution Range	IHC 1:100-1:300 ELISA 1:10000
Formulation	PBS, 50% Glycerol, 0.5% BSA and 0.02% Sodium Azide.
Isotype	IgG
Storage	Store at -20°C for up to 1 year from the date of receipt, and avoid repeat freeze-thaw cycles.
Instruction	

TARGET INFORMATION

Gene ID	154810
Gene Symbol	AMOTL1
Uniprot ID	AMOL1_HUMAN
Immunogen	The antiserum was produced against synthesized peptide derived from human AMOTL1 at amino acid range 441-490
Immunogen Region	410-490 Internal
Specificity	AMOTL1 polyclonal antibody (Angiotenin-Like Protein 1) binds to endogenous Angiotenin-Like Protein 1 at the amino acid region 410-490 Internal.
Immunogen Sequence	



Immunohistochemistry analysis of paraffin-embedded human prostate carcinoma tissue, using AMOTL1 Antibody. The picture on the right is blocked with the synthesized peptide.