

Anti-MYBL1 antibody (200-280 Internal) (STJ91589)

STJ91589

GENERAL INFORMATION

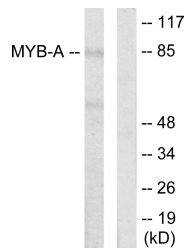
Product Type	Primary antibodies
Short Description	Rabbit polyclonal antibody anti-Myb-Related Protein A (200-280 Internal) is suitable for use in Western Blot and ELISA research applications.
Applications	WB, ELISA
Host/Source	Rabbit
Reactivity	Human, Mouse

PRODUCT PROPERTIES

Clonality	Polyclonal
Clone ID	
Concentration	1 mg/mL
Conjugation	Unconjugated
Purification	The antibody was affinity-purified from rabbit anti-serum by affinity-chromatography.
Dilution Range	WB 1:500-1:2000 ELISA 1:10000
Formulation	PBS, 50% Glycerol, 0.5% BSA and 0.02% Sodium Azide.
Isotype	IgG
Storage Instruction	Store at -20°C for up to 1 year from the date of receipt, and avoid repeat freeze-thaw cycles.

TARGET INFORMATION

Gene ID	4603
Gene Symbol	MYBL1
Uniprot ID	MYBA_HUMAN
Immunogen	The antiserum was produced against synthesized peptide derived from human MYB-A at amino acid range 231-280
Immunogen Region	200-280 Internal
Specificity	MYBL1 polyclonal antibody (Myb-Related Protein A) binds to endogenous Myb-Related Protein A at the amino acid region 200-280 Internal.
Immunogen Sequence	



Western blot analysis of lysates from LOVO cells, using MYB-A Antibody. The lane on the right is blocked with the synthesized peptide.