

Anti-PRKAG2 antibody (10-90 N-Term) (STJ91587)

STJ91587

GENERAL INFORMATION

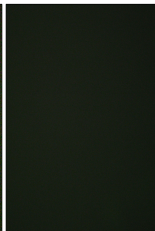
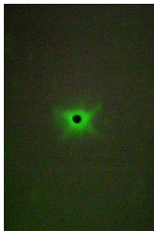
Product Type	Primary antibodies
Short Description	Rabbit polyclonal antibody anti-5 Amp-Activated Protein Kinase Subunit Gamma-2 (10-90 N-Term) is suitable for use in Western Blot, Immunohistochemistry, Immunofluorescence, Immunocytochemistry and ELISA research applications.
Applications	WB, IHC-P, IF, ICC, ELISA
Host/Source	Rabbit
Reactivity	Human, Mouse

PRODUCT PROPERTIES

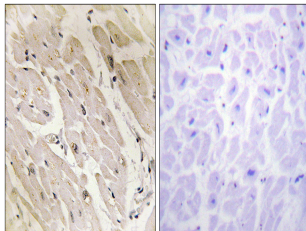
Clonality	Polyclonal
Clone ID	
Concentration	1 mg/mL
Conjugation	Unconjugated
Purification	The antibody was affinity-purified from rabbit anti-serum by affinity-chromatography.
Dilution Range	WB 1:500-1:2000 IHC 1:100-1:300 IF 1:200-1:1000 ELISA 1:20000
Formulation	PBS, 50% Glycerol, 0.5% BSA and 0.02% Sodium Azide.
Isotype	IgG
Storage Instruction	Store at -20°C for up to 1 year from the date of receipt, and avoid repeat freeze-thaw cycles.

TARGET INFORMATION

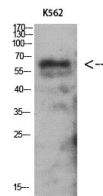
Gene ID	51422
Gene Symbol	PRKAG2
Uniprot ID	AAKG2_HUMAN
Immunogen	The antiserum was produced against synthesized peptide derived from human PRKAG2 at amino acid range 1-50
Immunogen Region	10-90 N-Term
Specificity	PRKAG2 polyclonal antibody (5 NA-Amp-Activated Protein Kinase Subunit Gamma-2) binds to endogenous 5 NA-Amp-Activated Protein Kinase Subunit Gamma-2 at the amino acid region 10-90 N-Term.
Immunogen Sequence	



Immunofluorescence analysis of A549 cells, using PRKAG2 Antibody. The picture on the right is blocked with the synthesized peptide.



Immunohistochemistry analysis of paraffin-embedded human heart tissue, using PRKAG2 Antibody. The picture on the right is blocked with the synthesized peptide.



Western blot analysis of K562 using Antibody diluted at 1:1000. Secondary antibody was diluted at 1:20000

This product is suitable for in-vitro studies under the RESEARCH USE ONLY [RUO] licence. This product must not be used as for diagnostic or other medical purposes.
St John's Laboratory Ltd, Knowledge Dock Business Centre, University Way, London, E16 2RD | Tel: 0208 223 3081