

Anti-AMPK Gamma 1/2/3 antibody (20-100 Internal) (STJ91586)

STJ91586

GENERAL INFORMATION

Product Type	Primary antibodies
Short Description	Rabbit polyclonal antibody anti-5 AMP-activated protein kinase subunit gamma-1 and 5 AMP-activated protein kinase subunit gamma-2 and 5 AMP-activated protein kinase subunit gamma-3 (20-100 Internal) is suitable for use in Western Blot, Immunofluorescence
Applications	WB, IF, ICC, ELISA
Host/Source	Rabbit
Reactivity	Human, Mouse, Rat

PRODUCT PROPERTIES

Clonality	Polyclonal
Clone ID	
Concentration	1 mg/mL
Conjugation	Unconjugated
Purification	The antibody was affinity-purified from rabbit anti-serum by affinity-chromatography.
Dilution Range	WB 1:500-1:2000 IF 1:200-1:1000 ELISA 1:5000
Formulation	PBS, 50% Glycerol, 0.5% BSA and 0.02% Sodium Azide.
Isotype	IgG
Storage Instruction	Store at -20°C for up to 1 year from the date of receipt, and avoid repeat freeze-thaw cycles.

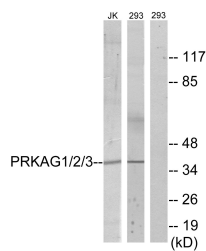
TARGET INFORMATION

Gene ID	5571 51422 53632 PRKAG1 PRKAG2 AAKG1_HUMAN AAKG2_HUMAN AAKG3_HUMAN
----------------	---

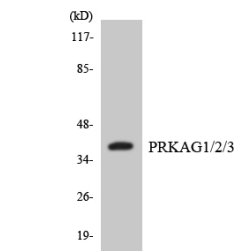
Immunogen
Immunogen Region
The antiserum was produced against synthesized peptide derived from human PRKAG1/2/3 at amino acid range 46-95
20-100 Internal

Specificity
AMPK Gamma 1/2/3 polyclonal antibody (5 NA-AMP-activated protein kinase subunit gamma-1 and 5 NA-AMP-activated protein kinase subunit gamma-2 and 5 NA-AMP-activated protein kinase subunit gamma-3) binds to endogenous 5 NA-AMP-activated protein kinase

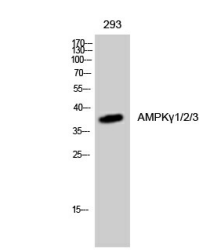
Immunogen Sequence



Western blot analysis of lysates from 293 and Jurkat cells, using PRKAG1/2/3 Antibody. The lane on the right is blocked with the synthesized peptide.



Western blot analysis of the lysates from 293 cells using PRKAG1/2/3 antibody.



Western blot analysis of 293 cells using AMPK Gamma 1/2/3 Polyclonal Antibody cells nucleus extracted by Minute TM Cytoplasmic and Nuclear Fractionation kit (SC-003, Inventiotech, MN, USA).

This product is suitable for in-vitro studies under the RESEARCH USE ONLY [RUO] licence. This product must not be used as for diagnostic or other medical purposes.
St John's Laboratory Ltd, Knowledge Dock Business Centre, University Way, London, E16 2RD | Tel: 0208 223 3081