

## Anti-PRKAB1 antibody (120-200) (STJ91583)

STJ91583

### GENERAL INFORMATION

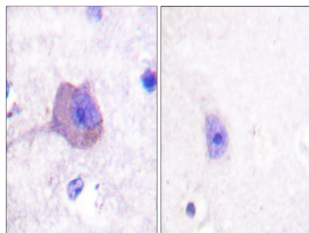
<b>Product Type</b>	Primary antibodies
<b>Short Description</b>	Rabbit polyclonal antibody anti-5 Amp-Activated Protein Kinase Subunit Beta-1 (120-200) is suitable for use in Western Blot, Immunohistochemistry, Immunofluorescence and ELISA research applications.
<b>Applications</b>	WB, IHC-P, IF-P, ELISA
<b>Host/Source</b>	Rabbit
<b>Reactivity</b>	Human, Mouse, Rat, Monkey

### PRODUCT PROPERTIES

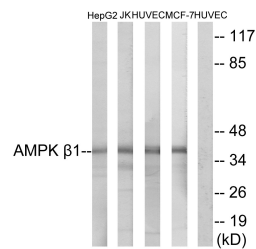
<b>Clonality</b>	Polyclonal
<b>Clone ID</b>	
<b>Concentration</b>	1 mg/mL
<b>Conjugation</b>	Unconjugated
<b>Purification</b>	The antibody was affinity-purified from rabbit anti-serum by affinity-chromatography.
<b>Dilution Range</b>	WB 1:500-1:2000 IHC 1:100-1:300 ELISA 1:20000
<b>Formulation</b>	PBS, 50% Glycerol, 0.5% BSA and 0.02% Sodium Azide.
<b>Isotype</b>	IgG
<b>Storage Instruction</b>	Store at -20°C for up to 1 year from the date of receipt, and avoid repeat freeze-thaw cycles.

### TARGET INFORMATION

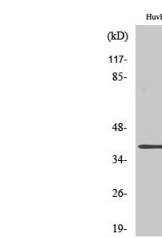
<b>Gene ID</b>	5564
<b>Gene Symbol</b>	PRKAB1
<b>Uniprot ID</b>	AAKB1_HUMAN
<b>Immunogen</b>	The antiserum was produced against synthesized peptide derived from human AMPK beta1 at amino acid range 147-196
<b>Immunogen Region</b>	120-200
<b>Specificity</b>	PRKAB1 polyclonal antibody (5 NA-Amp-Activated Protein Kinase Subunit Beta-1) binds to endogenous 5 NA-Amp-Activated Protein Kinase Subunit Beta-1 at the amino acid region 120-200.
<b>Immunogen Sequence</b>	



Immunohistochemistry analysis of paraffin-embedded human brain tissue, using AMPK beta1 Antibody. The picture on the right is blocked with the synthesized peptide.



Western blot analysis of lysates from HepG2, Jurkat, HUVEC, and MCF-7 cells, using AMPK beta1 Antibody. The lane on the right is blocked with the synthesized peptide.



Western blot analysis of various cells using AMPK Beta 1 Polyclonal Antibody diluted at 1: 1000 cells nucleus extracted by Minute TM Cytoplasmic and Nuclear Fractionation kit (SC-003, Inventiotech, MN, USA).

This product is suitable for in-vitro studies under the RESEARCH USE ONLY [RUO] licence. This product must not be used as for diagnostic or other medical purposes.  
St John's Laboratory Ltd, Knowledge Dock Business Centre, University Way, London, E16 2RD | Tel: 0208 223 3081