

Anti-AMPK Alpha 1/2 antibody (110-190) (STJ91581)

STJ91581

GENERAL INFORMATION

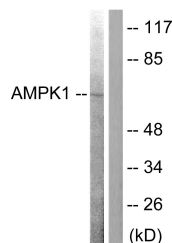
Product Type	Primary antibodies
Short Description	Rabbit polyclonal antibody anti-5 AMP-activated protein kinase catalytic subunit alpha-1 and 5 AMP-activated protein kinase catalytic subunit alpha-2 (110-190) is suitable for use in Western Blot, Immunohistochemistry, Immunofluorescence and ELISA re
Applications	WB, IHC-P, IF-P, ELISA
Host/Source	Rabbit
Reactivity	Human, Mouse, Rat, Monkey

PRODUCT PROPERTIES

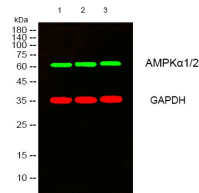
Clonality	Polyclonal
Clone ID	
Concentration	1 mg/mL
Conjugation	Unconjugated
Purification	The antibody was affinity-purified from rabbit anti-serum by affinity-chromatography.
Dilution	WB 1:500-1:2000
Range	IHC 1:100-1:300 ELISA 1:40000
Formulation	PBS, 50% Glycerol, 0.5% BSA and 0.02% Sodium Azide.
Isotype	IgG
Storage Instruction	Store at -20°C for up to 1 year from the date of receipt, and avoid repeat freeze-thaw cycles.

TARGET INFORMATION

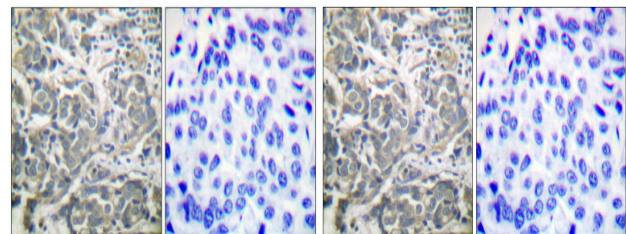
Gene ID	5562 5563
Gene Symbol	PRKAA1 PRKAA2
Uniprot ID	AAPK1_HUMAN AAPK2_HUMAN
Immunogen	The antiserum was produced against synthesized peptide derived from human AMPK alpha at amino acid range 140-189
Immunogen Region	110-190
Specificity	AMPK Alpha 1/2 polyclonal antibody (5 NA-AMP-activated protein kinase catalytic subunit alpha-1 and 5 NA-AMP-activated protein kinase catalytic subunit alpha-2) binds to endogenous 5 NA-AMP-activated protein kinase catalytic subunit alpha-1 and 5 NA-
Immunogen Sequence	



Western blot analysis of lysates from COS7 cells, treated with Adriamycin 0.5ng/ml 24h, using AMPK alpha Antibody. The lane on the right is blocked with the synthesized peptide.



Western blot analysis of lysates from 1) K562, 2) COS7, 3) KB cells. (Green) primary antibody was diluted at 1:1000, 4°C overnight, secondary antibody (cat: INA) was diluted at 1:10000, 37°C 1hour. (Red) GAPDH monoclonal antibody (2B8) (cat: (STJ96931) antibody was diluted at 1:5000 as loading control, 4°C overnight, secondary antibody (cat: INA) was diluted at 1:10000, 37°C 1hour.



Immunohistochemical analysis of paraffin-embedded Human breast cancer. Antibody was diluted at 1:100 (4°C overnight). High-pressure and temperature Tris-EDTA, pH8.0 was used for antigen retrieval. Negative control (right) obtained from antibody was pre-absorbed by immunogen peptide.

Immunohistochemistry analysis of paraffin-embedded human breast carcinoma tissue, using AMPK alpha Antibody. The picture on the right is blocked with the synthesized peptide.

This product is suitable for in-vitro studies under the RESEARCH USE ONLY [RUO] licence. This product must not be used as for diagnostic or other medical purposes.

St John's Laboratory Ltd, Knowledge Dock Business Centre, University Way, London, E16 2RD | Tel: 0208 223 3081