

Anti-ALYREF antibody (90-170 Internal) (STJ91573)

STJ91573

GENERAL INFORMATION

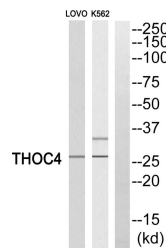
Product Type	Primary antibodies
Short Description	Rabbit polyclonal antibody anti-Tho Complex Subunit 4 (90-170 Internal) is suitable for use in Western Blot and ELISA research applications.
Applications	WB, ELISA
Host/Source	Rabbit
Reactivity	Human, Mouse, Rat

PRODUCT PROPERTIES

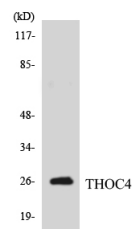
Clonality	Polyclonal
Clone ID	
Concentration	1 mg/mL
Conjugation	Unconjugated
Purification	The antibody was affinity-purified from rabbit anti-serum by affinity-chromatography.
Dilution Range	WB 1:500-1:2000 ELISA 1:10000
Formulation	PBS, 50% Glycerol, 0.5% BSA and 0.02% Sodium Azide.
Isotype	IgG
Storage Instruction	Store at -20°C for up to 1 year from the date of receipt, and avoid repeat freeze-thaw cycles.

TARGET INFORMATION

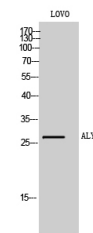
Gene ID	10189
Gene Symbol	ALYREF
Uniprot ID	THOC4_HUMAN
Immunogen	The antiserum was produced against synthesized peptide derived from human THOC4 at amino acid range 121-170
Immunogen Region	90-170 Internal
Specificity	ALYREF polyclonal antibody (Tho Complex Subunit 4) binds to endogenous Tho Complex Subunit 4 at the amino acid region 90-170 Internal.
Immunogen Sequence	



Western blot analysis of THOC4 Antibody. The lane on the right is blocked with the THOC4 peptide.



Western blot analysis of the lysates from HepG2 cells using THOC4 antibody.



Western blot analysis of LOVO cells using ALY Polyclonal Antibody

This product is suitable for in-vitro studies under the RESEARCH USE ONLY [RUO] licence. This product must not be used as for diagnostic or other medical purposes.
St John's Laboratory Ltd, Knowledge Dock Business Centre, University Way, London, E16 2RD | Tel: 0208 223 3081