

Anti-TMEM237 antibody (150-230 Internal) (STJ91569)

STJ91569

GENERAL INFORMATION

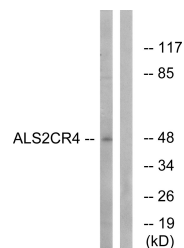
Product Type	Primary antibodies
Short Description	Rabbit polyclonal antibody anti-Transmembrane Protein 237 (150-230 Internal) is suitable for use in Western Blot and ELISA research applications.
Applications	WB, ELISA
Host/Source	Rabbit
Reactivity	Human, Mouse

PRODUCT PROPERTIES

Clonality	Polyclonal
Clone ID	
Concentration	1 mg/mL
Conjugation	Unconjugated
Purification	The antibody was affinity-purified from rabbit anti-serum by affinity-chromatography.
Dilution Range	WB 1:500-1:2000 ELISA 1:20000
Formulation	PBS, 50% Glycerol, 0.5% BSA and 0.02% Sodium Azide.
Isotype	IgG
Storage	Store at -20°C for up to 1 year from the date of receipt, and avoid repeat freeze-thaw cycles.
Instruction	

TARGET INFORMATION

Gene ID	65062
Gene Symbol	TMEM237
Uniprot ID	TM237_HUMAN
Immunogen	The antiserum was produced against synthesized peptide derived from human ALS2CR4 at amino acid range 181-230
Immunogen Region	150-230 Internal
Specificity	TMEM237 polyclonal antibody (Transmembrane Protein 237) binds to endogenous Transmembrane Protein 237 at the amino acid region 150-230 Internal.
Immunogen Sequence	



Western blot analysis of lysates from Jurkat cells, using ALS2CR4 Antibody. The lane on the right is blocked with the synthesized peptide.