

Anti-C2CD6 antibody (460-540 C-Term) (STJ91567)

STJ91567

GENERAL INFORMATION

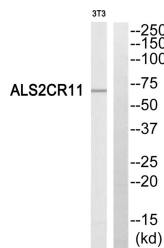
Product Type	Primary antibodies
Short Description	Rabbit polyclonal antibody anti-C2 Calcium-Dependent Domain-Containing Protein 6 (460-540 C-Term) is suitable for use in Western Blot and ELISA research applications.
Applications	WB, ELISA
Host/Source	Rabbit
Reactivity	Human, Rat, Mouse

PRODUCT PROPERTIES

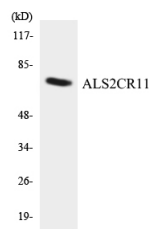
Clonality	Polyclonal
Clone ID	
Concentration	1 mg/mL
Conjugation	Unconjugated
Purification	The antibody was affinity-purified from rabbit anti-serum by affinity-chromatography.
Dilution	WB 1:500-1:2000
Range	ELISA 1:40000
Formulation	PBS, 50% Glycerol, 0.5% BSA and 0.02% Sodium Azide.
Isotype	IgG
Storage	Store at -20°C for up to 1 year from the date of receipt, and avoid repeat freeze-thaw cycles.
Instruction	

TARGET INFORMATION

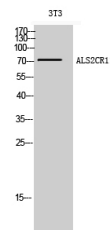
Gene ID	151254
Gene Symbol	C2CD6
Uniprot ID	C2CD6_HUMAN
Immunogen	The antiserum was produced against synthesized peptide derived from human ALS2CR11 at amino acid range 491-540
Immunogen Region	460-540 C-Term
Specificity	C2CD6 polyclonal antibody (C2 Calcium-Dependent Domain-Containing Protein 6) binds to endogenous C2 Calcium-Dependent Domain-Containing Protein 6 at the amino acid region 460-540 C-Term.
Immunogen Sequence	



Western blot analysis of ALS2CR11 Antibody. The lane on the right is blocked with the ALS2CR11 peptide.



Western blot analysis of the lysates from COLO205 cells using ALS2CR11 antibody.



Western blot analysis of 3T3 cells using ALS2CR11 Polyclonal Antibody.

This product is suitable for in-vitro studies under the RESEARCH USE ONLY [RUO] licence. This product must not be used as for diagnostic or other medical purposes.
 St John's Laboratory Ltd, Knowledge Dock Business Centre, University Way, London, E16 2RD | Tel: 0208 223 3081