

Anti-IGFALS antibody (280-360 Internal) (STJ91566)

STJ91566

GENERAL INFORMATION

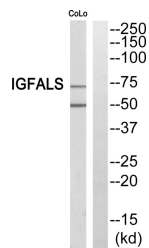
Product Type	Primary antibodies
Short Description	Rabbit polyclonal antibody anti-Insulin-Like Growth Factor-Binding Protein Complex Acid Labile Subunit (280-360 Internal) is suitable for use in Western Blot and ELISA research applications.
Applications	WB, ELISA
Host/Source	Rabbit
Reactivity	Human, Rat, Mouse

PRODUCT PROPERTIES

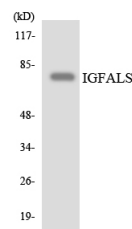
Clonality	Polyclonal
Clone ID	
Concentration	1 mg/mL
Conjugation	Unconjugated
Purification	The antibody was affinity-purified from rabbit anti-serum by affinity-chromatography.
Dilution	WB 1:500-1:2000
Range	ELISA 1:10000
Formulation	PBS, 50% Glycerol, 0.5% BSA and 0.02% Sodium Azide.
Isotype	IgG
Storage	Store at -20°C for up to 1 year from the date of receipt, and avoid repeat freeze-thaw cycles.
Instruction	

TARGET INFORMATION

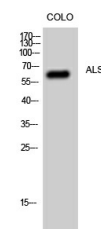
Gene ID	3483
Gene Symbol	IGFALS
Uniprot ID	ALS_HUMAN
Immunogen	The antiserum was produced against synthesized peptide derived from human IGFALS at amino acid range 303-352
Immunogen Region	280-360 Internal
Specificity	IGFALS polyclonal antibody (Insulin-Like Growth Factor-Binding Protein Complex Acid Labile Subunit) binds to endogenous Insulin-Like Growth Factor-Binding Protein Complex Acid Labile Subunit at the amino acid region 280-360 Internal.
Immunogen Sequence	



Western blot analysis of IGFALS Antibody. The lane on the right is blocked with the IGFALS peptide.



Western blot analysis of the lysates from RAW264.7 cells using IGFALS antibody.



Western blot analysis of CoLo cells using ALS Polyclonal Antibody.

This product is suitable for in-vitro studies under the RESEARCH USE ONLY [RUO] licence. This product must not be used as for diagnostic or other medical purposes.
 St John's Laboratory Ltd, Knowledge Dock Business Centre, University Way, London, E16 2RD | Tel: 0208 223 3081