

Anti-ALMS1 antibody (1530-1610 Internal) (STJ91564)

STJ91564

GENERAL INFORMATION

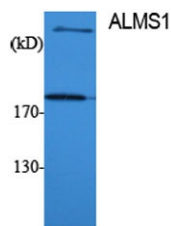
Product Type	Primary antibodies
Short Description	Rabbit polyclonal antibody anti-Alstrom Syndrome Protein 1 (1530-1610 Internal) is suitable for use in Western Blot, Immunohistochemistry, Immunofluorescence and ELISA research applications.
Applications	WB, IHC-P, IF-P, ELISA
Host/Source	Rabbit
Reactivity	Human, Rat, Mouse

PRODUCT PROPERTIES

Clonality	Polyclonal
Clone ID	
Concentration	1 mg/mL
Conjugation	Unconjugated
Purification	The antibody was affinity-purified from rabbit anti-serum by affinity-chromatography.
Dilution Range	WB 1:500-1:2000 IHC 1:100-1:300 ELISA 1:40000
Formulation	PBS, 50% Glycerol, 0.5% BSA and 0.02% Sodium Azide.
Isotype	IgG
Storage Instruction	Store at -20°C for up to 1 year from the date of receipt, and avoid repeat freeze-thaw cycles.

TARGET INFORMATION

Gene ID	7840
Gene Symbol	ALMS1
Uniprot ID	ALMS1_HUMAN
Immunogen	Synthesized peptide derived from ALMS1. at amino acid range: 1530-1610
Immunogen Region	1530-1610 Internal
Specificity	ALMS1 polyclonal antibody (Alstrom Syndrome Protein 1) binds to endogenous Alstrom Syndrome Protein 1 at the amino acid region 1530-1610 Internal.
Immunogen Sequence	



95-
Western blot analysis of various cells using ALMS1 Polyclonal Antibody

This product is suitable for in-vitro studies under the RESEARCH USE ONLY [RUO] licence. This product must not be used as for diagnostic or other medical purposes.
St John's Laboratory Ltd, Knowledge Dock Business Centre, University Way, London, E16 2RD | Tel: 0208 223 3081