

Anti-ALDOA antibody (1-80 N-Term) (STJ91556)

STJ91556

GENERAL INFORMATION

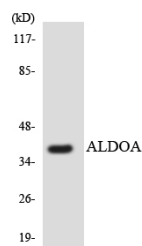
Product Type	Primary antibodies
Short Description	Rabbit polyclonal antibody anti-Fructose-Bisphosphate Aldolase A (1-80 N-Term) is suitable for use in Western Blot, Immunofluorescence, Immunocytochemistry and ELISA research applications.
Applications	WB, IF, ICC, ELISA
Host/Source	Rabbit
Reactivity	Human, Mouse, Rat

PRODUCT PROPERTIES

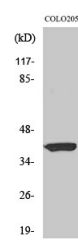
Clonality	Polyclonal
Clone ID	
Concentration	1 mg/mL
Conjugation	Unconjugated
Purification	The antibody was affinity-purified from rabbit anti-serum by affinity-chromatography.
Dilution Range	WB 1:500-1:2000 IF 1:200-1:1000 ELISA 1:10000
Formulation	PBS, 50% Glycerol, 0.5% BSA and 0.02% Sodium Azide.
Isotype	IgG
Storage Instruction	Store at -20°C for up to 1 year from the date of receipt, and avoid repeat freeze-thaw cycles.

TARGET INFORMATION

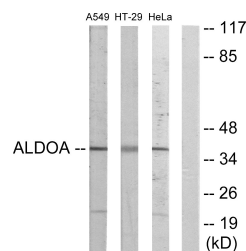
Gene ID	226
Gene Symbol	ALDOA
Uniprot ID	ALDOA_HUMAN
Immunogen	The antiserum was produced against synthesized peptide derived from human ALDOA at amino acid range 1-50
Immunogen Region	1-80 N-Term
Specificity	ALDOA polyclonal antibody (Fructose-Bisphosphate Aldolase A) binds to endogenous Fructose-Bisphosphate Aldolase A at the amino acid region 1-80 N-Term.
Immunogen Sequence	



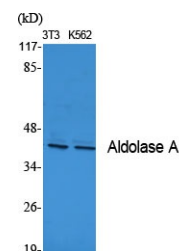
Western blot analysis of the lysates from HT-29 cells using ALDOA antibody.



Western blot analysis of HT29 cells using Aldolase A Polyclonal Antibody diluted at 1: 1000



Western blot analysis of lysates from A549, HeLa, and HT-29 cells, using ALDOA Antibody. The lane on the right is blocked with the synthesized peptide.



Western blot analysis of various cells using Aldolase A Polyclonal Antibody diluted at 1: 1000

This product is suitable for in-vitro studies under the RESEARCH USE ONLY [RUO] licence. This product must not be used as for diagnostic or other medical purposes.
St John's Laboratory Ltd, Knowledge Dock Business Centre, University Way, London, E16 2RD | Tel: 0208 223 3081