

Anti-ALDH1A2 antibody (390-470 C-Term) (STJ91553)

STJ91553

GENERAL INFORMATION

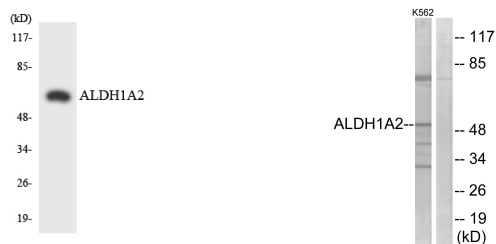
Product Type	Primary antibodies
Short Description	Rabbit polyclonal antibody anti-Retinal Dehydrogenase 2 (390-470 C-Term) is suitable for use in Western Blot, Immunohistochemistry, Immunofluorescence and ELISA research applications.
Applications	WB, IHC-P, IF-P, ELISA
Host/Source	Rabbit
Reactivity	Human, Mouse, Rat

PRODUCT PROPERTIES

Clonality	Polyclonal
Clone ID	
Concentration	1 mg/mL
Conjugation	Unconjugated
Purification	The antibody was affinity-purified from rabbit anti-serum by affinity-chromatography.
Dilution Range	WB 1:500-1:2000 IHC1:50-300 ELISA 1:20000
Formulation	PBS, 50% Glycerol, 0.5% BSA and 0.02% Sodium Azide.
Isotype	IgG
Storage Instruction	Store at -20°C for up to 1 year from the date of receipt, and avoid repeat freeze-thaw cycles.

TARGET INFORMATION

Gene ID	8854
Gene Symbol	ALDH1A2
Uniprot ID	AL1A2_HUMAN
Immunogen	The antiserum was produced against synthesized peptide derived from human ALDH1A2 at amino acid range 412-461
Immunogen Region	390-470 C-Term
Specificity	ALDH1A2 polyclonal antibody (Retinal Dehydrogenase 2) binds to endogenous Retinal Dehydrogenase 2 at the amino acid region 390-470 C-Term.
Immunogen Sequence	



Western blot analysis of the lysates from COLO205 cells using ALDH1A2 antibody.

Western blot analysis of lysates from K562 cells, using ALDH1A2 Antibody. The lane on the right is blocked with the synthesized peptide.

This product is suitable for in-vitro studies under the RESEARCH USE ONLY [RUO] licence. This product must not be used as for diagnostic or other medical purposes.
St John's Laboratory Ltd, Knowledge Dock Business Centre, University Way, London, E16 2RD | Tel: 0208 223 3081