

Anti-AKT1 antibody (60-140) (STJ91549)

STJ91549

GENERAL INFORMATION

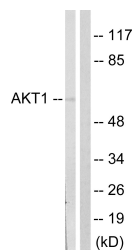
| | |
|--------------------------|---|
| Product Type | Primary antibodies |
| Short Description | Rabbit polyclonal antibody anti-Rac-Alpha Serine/Threonine-Protein Kinase (60-140) is suitable for use in Western Blot and ELISA research applications. |
| Applications | WB, ELISA |
| Host/Source | Rabbit |
| Reactivity | Human, Mouse, Rat |

PRODUCT PROPERTIES

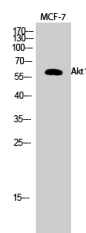
| | |
|----------------------------|--|
| Clonality | Polyclonal |
| Clone ID | |
| Concentration | 1 mg/mL |
| Conjugation | Unconjugated |
| Purification | The antibody was affinity-purified from rabbit anti-serum by affinity-chromatography. |
| Dilution Range | WB 1:500-1:2000 ELISA 1:20000 |
| Formulation | PBS, 50% Glycerol, 0.5% BSA and 0.02% Sodium Azide. |
| Isotype | IgG |
| Storage Instruction | Store at -20°C for up to 1 year from the date of receipt, and avoid repeat freeze-thaw cycles. |

TARGET INFORMATION

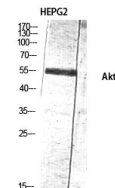
| | |
|---------------------------|---|
| Gene ID | 207 |
| Gene Symbol | AKT1 |
| Uniprot ID | AKT1_HUMAN |
| Immunogen | The antiserum was produced against synthesized peptide derived from human Akt at amino acid range 90-139 |
| Immunogen Region | 60-140 |
| Specificity | AKT1 polyclonal antibody (Rac-Alpha Serine/Threonine-Protein Kinase) binds to endogenous Rac-Alpha Serine/Threonine-Protein Kinase at the amino acid region 60-140. |
| Immunogen Sequence | |



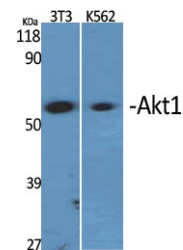
Western blot analysis of lysates from NIH/3T3 cells, treated with PDGF 50ng/ml 20 min, using Akt Antibody. The lane on the right is blocked with the synthesized peptide.



Western blot analysis of MCF-7 cells using Akt1 Polyclonal Antibody diluted at 1: 1000



Western blot analysis of HEPG2 lysis using Akt1 antibody. Antibody was diluted at 1:1000



Western blot analysis of various cells using Akt1 Polyclonal Antibody diluted at 1: 1000

This product is suitable for in-vitro studies under the RESEARCH USE ONLY [RUO] licence. This product must not be used as for diagnostic or other medical purposes.
St John's Laboratory Ltd, Knowledge Dock Business Centre, University Way, London, E16 2RD | Tel: 0208 223 3081