

Anti-Akt antibody (250-330) (STJ91538)

STJ91538

GENERAL INFORMATION

Product Type	Primary antibodies
Short Description	Rabbit polyclonal antibody anti-RAC-alpha serine/threonine-protein kinase and RAC-beta serine/threonine-protein kinase and RAC-gamma serine/threonine-protein kinase (250-330) is suitable for use in Western Blot, Immunohistochemistry, Immunofluorescence
Applications	WB, IHC-P, IF-P, ELISA
Host/Source	Rabbit
Reactivity	Human, Mouse, Rat

PRODUCT PROPERTIES

Clonality	Polyclonal
Clone ID	
Concentration	1 mg/mL
Conjugation	Unconjugated
Purification	The antibody was affinity-purified from rabbit anti-serum by affinity-chromatography.
Dilution Range	WB 1:500-1:2000 IHC 1:100-1:300 ELISA 1:5000
Formulation	PBS, 50% Glycerol, 0.5% BSA and 0.02% Sodium Azide.
Isotype	IgG
Storage Instruction	Store at -20°C for up to 1 year from the date of receipt, and avoid repeat freeze-thaw cycles.

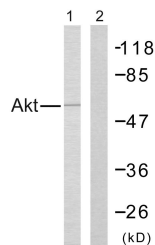
TARGET INFORMATION

Gene ID [207](#)
[10000](#)
[208](#)
[AKT1](#)
[AKT3](#)
[AKT1_HUMAN](#)
[AKT3_HUMAN](#)
[AKT2_HUMAN](#)
 <

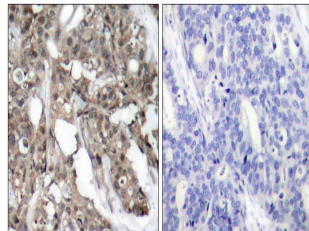
Immunogen Region The antiserum was produced against synthesized peptide derived from human Akt at amino acid range 276-325
 250-330

Specificity Akt polyclonal antibody (RAC-alpha serine/threonine-protein kinase and RAC-beta serine/threonine-protein kinase and RAC-gamma serine/threonine-protein kinase) binds to endogenous RAC-alpha serine/threonine-protein kinase and RAC-beta serine/threonine

Immunogen Sequence



Western blot analysis of lysates from Jurkat cells, treated with H₂O₂, using Akt Antibody. The lane on the right is blocked with the synthesized peptide.



Immunohistochemistry analysis of paraffin-embedded human breast carcinoma tissue, using Akt Antibody. The picture on the right is blocked with the synthesized peptide.

This product is suitable for in-vitro studies under the RESEARCH USE ONLY [RUO] licence. This product must not be used as for diagnostic or other medical purposes.
 St John's Laboratory Ltd, Knowledge Dock Business Centre, University Way, London, E16 2RD | Tel: 0208 223 3081