

Anti-AKR1C8P antibody (70-150 Internal) (STJ91535)

STJ91535

GENERAL INFORMATION

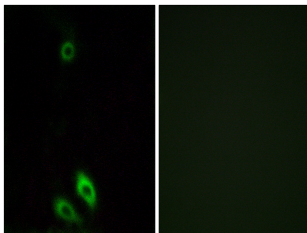
Product Type	Primary antibodies
Short Description	Rabbit polyclonal antibody anti-Putative Aldo-Keto Reductase Family 1 Member C8 (70-150 Internal) is suitable for use in Immunofluorescence, Immunocytochemistry and ELISA research applications.
Applications	IF, ICC, ELISA
Host/Source	Rabbit
Reactivity	Human, Rat, Mouse

PRODUCT PROPERTIES

Clonality	Polyclonal
Clone ID	
Concentration	1 mg/mL
Conjugation	Unconjugated
Purification	The antibody was affinity-purified from rabbit anti-serum by affinity-chromatography.
Dilution	IF 1:200-1:1000
Range	ELISA 1:40000
Formulation	PBS, 50% Glycerol, 0.5% BSA and 0.02% Sodium Azide.
Isotype	IgG
Storage	Store at -20°C for up to 1 year from the date of receipt, and avoid repeat freeze-thaw cycles.
Instruction	

TARGET INFORMATION

Gene ID	NA
Gene Symbol	AKR1C8P
Uniprot ID	AKCL1_HUMAN
Immunogen	The antiserum was produced against synthesized peptide derived from human AKR1CL1 at amino acid range 80-129
Immunogen Region	70-150 Internal
Specificity	AKR1C8P polyclonal antibody (Putative Aldo-Keto Reductase Family 1 Member C8) binds to endogenous Putative Aldo-Keto Reductase Family 1 Member C8 at the amino acid region 70-150 Internal.
Immunogen Sequence	



Immunofluorescence analysis of A549 cells, using AKR1CL1 Antibody. The picture on the right is blocked with the synthesized peptide.