

Anti-AKAP5 antibody (1-80 N-Term) (STJ91532)

STJ91532

GENERAL INFORMATION

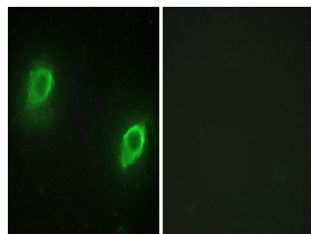
Product Type	Primary antibodies
Short Description	Rabbit polyclonal antibody anti-A-Kinase Anchor Protein 5 (1-80 N-Term) is suitable for use in Western Blot, Immunohistochemistry, Immunofluorescence, Immunocytochemistry and ELISA research applications.
Applications	WB, IHC-P, IF, ICC, ELISA
Host/Source	Rabbit
Reactivity	Human, Rat, Mouse

PRODUCT PROPERTIES

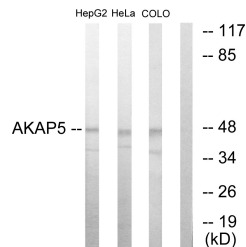
Clonality	Polyclonal
Clone ID	
Concentration	1 mg/mL
Conjugation	Unconjugated
Purification	The antibody was affinity-purified from rabbit anti-serum by affinity-chromatography.
Dilution	WB 1:500-1:2000
Range	IHC 1:100-1:300 IF 1:200-1:1000 ELISA 1:10000
Formulation	PBS, 50% Glycerol, 0.5% BSA and 0.02% Sodium Azide.
Isotype	IgG
Storage	Store at -20°C for up to 1 year from the date of receipt, and avoid repeat freeze-thaw cycles.
Instruction	

TARGET INFORMATION

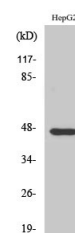
Gene ID	9495
Gene Symbol	AKAP5
Uniprot ID	AKAP5_HUMAN
Immunogen	The antiserum was produced against synthesized peptide derived from human AKAP5 at amino acid range 1-50
Immunogen Region	1-80 N-Term
Specificity	AKAP5 polyclonal antibody (A-Kinase Anchor Protein 5) binds to endogenous A-Kinase Anchor Protein 5 at the amino acid region 1-80 N-Term.
Immunogen Sequence	



Immunofluorescence analysis of HeLa cells, using AKAP5 Antibody. The picture on the right is blocked with the synthesized peptide.



Western blot analysis of lysates from HepG2, HeLa, and COLO205 cells, using AKAP5 Antibody. The lane on the right is blocked with the synthesized peptide.



Western blot analysis of various cells using AKAP 79 Polyclonal Antibody diluted at 1: 1000

This product is suitable for in-vitro studies under the RESEARCH USE ONLY [RUO] licence. This product must not be used as for diagnostic or other medical purposes.
St John's Laboratory Ltd, Knowledge Dock Business Centre, University Way, London, E16 2RD | Tel: 0208 223 3081