

Anti-AKAP14 antibody (10-90 N-Term) (STJ91527)

STJ91527

GENERAL INFORMATION

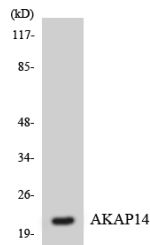
Product Type	Primary antibodies
Short Description	Rabbit polyclonal antibody anti-A-Kinase Anchor Protein 14 (10-90 N-Term) is suitable for use in Western Blot, Immunohistochemistry, Immunofluorescence, Immunocytochemistry and ELISA research applications.
Applications	WB, IHC-P, IF, ICC, ELISA
Host/Source	Rabbit
Reactivity	Human, Rat, Mouse

PRODUCT PROPERTIES

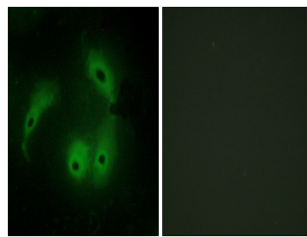
Clonality	Polyclonal
Clone ID	
Concentration	1 mg/mL
Conjugation	Unconjugated
Purification	The antibody was affinity-purified from rabbit anti-serum by affinity-chromatography.
Dilution Range	WB 1:500-1:2000 IHC 1:100-1:300 IF 1:200-1:1000 ELISA 1:5000
Formulation	PBS, 50% Glycerol, 0.5% BSA and 0.02% Sodium Azide.
Isotype	IgG
Storage Instruction	Store at -20°C for up to 1 year from the date of receipt, and avoid repeat freeze-thaw cycles.

TARGET INFORMATION

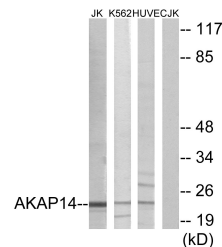
Gene ID	158798
Gene Symbol	AKAP14
Uniprot ID	AKA28_HUMAN
Immunogen	The antiserum was produced against synthesized peptide derived from human AKAP14 at amino acid range 1-50
Immunogen Region	10-90 N-Term
Specificity	AKAP14 polyclonal antibody (A-Kinase Anchor Protein 14) binds to endogenous A-Kinase Anchor Protein 14 at the amino acid region 10-90 N-Term.
Immunogen Sequence	



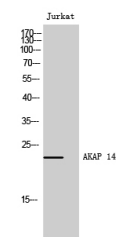
Western blot analysis of the lysates from RAW264.7 cells using AKAP14 antibody.



Immunofluorescence analysis of HeLa cells, using AKAP14 Antibody. The picture on the right is blocked with the synthesized peptide.



Western blot analysis of lysates from Jurkat, K562, and HUVEC cells, using AKAP14 Antibody. The lane on the right is blocked with the synthesized peptide.



Western blot analysis of Jurkat cells using AKAP 14 Polyclonal Antibody

This product is suitable for in-vitro studies under the RESEARCH USE ONLY [RUO] licence. This product must not be used as for diagnostic or other medical purposes.
St John's Laboratory Ltd, Knowledge Dock Business Centre, University Way, London, E16 2RD | Tel: 0208 223 3081