

Anti-AKAP13 antibody (690-770 Internal) (STJ91526)

STJ91526

GENERAL INFORMATION

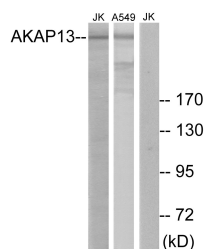
Product Type	Primary antibodies
Short Description	Rabbit polyclonal antibody anti-A-Kinase Anchor Protein 13 (690-770 Internal) is suitable for use in Western Blot, Immunohistochemistry, Immunofluorescence and ELISA research applications.
Applications	WB, IHC-P, IF-P, ELISA
Host/Source	Rabbit
Reactivity	Human, Rat, Mouse

PRODUCT PROPERTIES

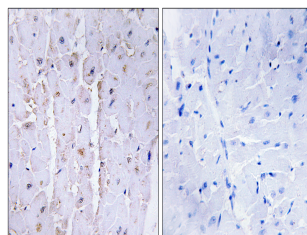
Clonality	Polyclonal
Clone ID	
Concentration	1 mg/mL
Conjugation	Unconjugated
Purification	The antibody was affinity-purified from rabbit anti-serum by affinity-chromatography.
Dilution Range	WB 1:500-1:2000 IHC 1:100-1:300 ELISA 1:20000
Formulation	PBS, 50% Glycerol, 0.5% BSA and 0.02% Sodium Azide.
Isotype	IgG
Storage Instruction	Store at -20°C for up to 1 year from the date of receipt, and avoid repeat freeze-thaw cycles.

TARGET INFORMATION

Gene ID	11214
Gene Symbol	AKAP13
Uniprot ID	AKP13_HUMAN
Immunogen	The antiserum was produced against synthesized peptide derived from human AKAP13 at amino acid range 721-770
Immunogen Region	690-770 Internal
Specificity	AKAP13 polyclonal antibody (A-Kinase Anchor Protein 13) binds to endogenous A-Kinase Anchor Protein 13 at the amino acid region 690-770 Internal.
Immunogen Sequence	



Western blot analysis of lysates from Jurkat and A549 cells, using AKAP13 Antibody. The lane on the right is blocked with the synthesized peptide.



Immunohistochemistry analysis of paraffin-embedded human heart tissue, using AKAP13 Antibody. The picture on the right is blocked with the synthesized peptide.

This product is suitable for in-vitro studies under the RESEARCH USE ONLY [RUO] licence. This product must not be used as for diagnostic or other medical purposes.
St John's Laboratory Ltd, Knowledge Dock Business Centre, University Way, London, E16 2RD | Tel: 0208 223 3081