

Anti-AKAP10 antibody (10-90 N-Term) (STJ91524)

STJ91524

GENERAL INFORMATION

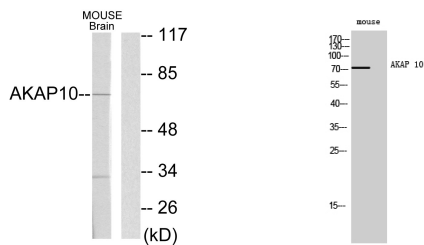
Product Type	Primary antibodies
Short Description	Rabbit polyclonal antibody anti-A-Kinase Anchor Protein 10-Mitochondrial (10-90 N-Term) is suitable for use in Western Blot, Immunohistochemistry, Immunofluorescence, Immunocytochemistry and ELISA research applications.
Applications	WB, IHC-P, IF, ICC, ELISA
Host/Source	Rabbit
Reactivity	Human, Mouse, Rat

PRODUCT PROPERTIES

Clonality	Polyclonal
Clone ID	
Concentration	1 mg/mL
Conjugation	Unconjugated
Purification	The antibody was affinity-purified from rabbit anti-serum by affinity-chromatography.
Dilution Range	WB 1:500-1:2000 IHC 1:100-1:300 IF 1:200-1:1000 ELISA 1:10000
Formulation	PBS, 50% Glycerol, 0.5% BSA and 0.02% Sodium Azide.
Isotype	IgG
Storage Instruction	Store at -20°C for up to 1 year from the date of receipt, and avoid repeat freeze-thaw cycles.

TARGET INFORMATION

Gene ID	11216
Gene Symbol	AKAP10
Uniprot ID	AKA10_HUMAN
Immunogen	The antiserum was produced against synthesized peptide derived from human AKAP10 at amino acid range 10-59
Immunogen Region	10-90 N-Term
Specificity	AKAP10 polyclonal antibody (A-Kinase Anchor Protein 10-Mitochondrial) binds to endogenous A-Kinase Anchor Protein 10-Mitochondrial at the amino acid region 10-90 N-Term.
Immunogen Sequence	



Western blot analysis of lysates from mouse brain, using AKAP10 Antibody. The lane on the right is blocked with the synthesized peptide.

Western blot analysis of mouse cells using AKAP 10 Polyclonal Antibody

This product is suitable for in-vitro studies under the RESEARCH USE ONLY [RUO] licence. This product must not be used as for diagnostic or other medical purposes.
St John's Laboratory Ltd, Knowledge Dock Business Centre, University Way, London, E16 2RD | Tel: 0208 223 3081