

Anti-AK1 antibody (70-150 Internal) (STJ91521)

STJ91521

GENERAL INFORMATION

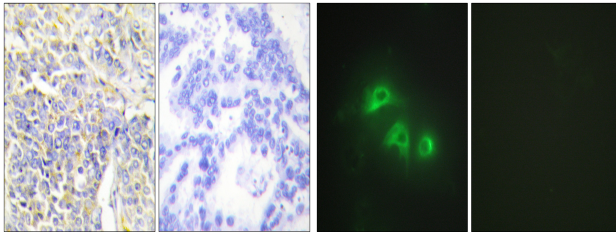
Product Type	Primary antibodies
Short Description	Rabbit polyclonal antibody anti-Adenylate Kinase Isoenzyme 1 (70-150 Internal) is suitable for use in Immunohistochemistry, Immunofluorescence, Immunocytochemistry and ELISA research applications.
Applications	IHC-P, IF, ICC, ELISA
Host/Source	Rabbit
Reactivity	Human, Mouse, Rat

PRODUCT PROPERTIES

Clonality	Polyclonal
Clone ID	
Concentration	1 mg/mL
Conjugation	Unconjugated
Purification	The antibody was affinity-purified from rabbit anti-serum by affinity-chromatography.
Dilution Range	IHC 1:100-1:300 IF 1:200-1:1000 ELISA 1:5000
Formulation	PBS, 50% Glycerol, 0.5% BSA and 0.02% Sodium Azide.
Isotype	IgG
Storage Instruction	Store at -20°C for up to 1 year from the date of receipt, and avoid repeat freeze-thaw cycles.

TARGET INFORMATION

Gene ID	203
Gene Symbol	AK1
Uniprot ID	KAD1_HUMAN
Immunogen Region	The antiserum was produced against synthesized peptide derived from human KAD1 at amino acid range 101-150
Specificity	AK1 polyclonal antibody (Adenylate Kinase Isoenzyme 1) binds to endogenous Adenylate Kinase Isoenzyme 1 at the amino acid region 70-150 Internal.
Immunogen Sequence	



Immunohistochemistry analysis of paraffin-embedded human lung carcinoma tissue, using KAD1 Antibody. The picture on the right is blocked with the synthesized peptide.

Immunofluorescence analysis of HepG2 cells, using KAD1 Antibody. The picture on the right is blocked with the synthesized peptide.

This product is suitable for in-vitro studies under the RESEARCH USE ONLY [RUO] licence. This product must not be used as for diagnostic or other medical purposes.
St John's Laboratory Ltd, Knowledge Dock Business Centre, University Way, London, E16 2RD | Tel: 0208 223 3081