

## Anti-NT5C1B antibody (140-220 Internal) (STJ91520)

STJ91520

### GENERAL INFORMATION

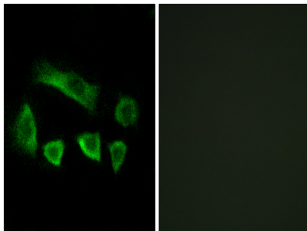
<b>Product Type</b>	Primary antibodies
<b>Short Description</b>	Rabbit polyclonal antibody anti-Cytosolic 5 Nucleotidase 1b (140-220 Internal) is suitable for use in Immunohistochemistry, Immunofluorescence, Immunocytochemistry, Western Blot and ELISA research applications.
<b>Applications</b>	IHC-P, IF, ICC, WB, ELISA
<b>Host/Source</b>	Rabbit
<b>Reactivity</b>	Human, Rat, Mouse

### PRODUCT PROPERTIES

<b>Clonality</b>	Polyclonal
<b>Clone ID</b>	
<b>Concentration</b>	1 mg/mL
<b>Conjugation</b>	Unconjugated
<b>Purification</b>	The antibody was affinity-purified from rabbit anti-serum by affinity-chromatography.
<b>Dilution Range</b>	WB 1:500-2000 IHC 1:100-1:300 IF 1:200-1:1000 ELISA 1:20000
<b>Formulation</b>	PBS, 50% Glycerol, 0.5% BSA and 0.02% Sodium Azide.
<b>Isotype</b>	IgG
<b>Storage Instruction</b>	Store at -20°C for up to 1 year from the date of receipt, and avoid repeat freeze-thaw cycles.

### TARGET INFORMATION

<b>Gene ID</b>	<a href="#">100526794/93034</a>
<b>Gene Symbol</b>	<a href="#">NT5C1B</a>
<b>Uniprot ID</b>	<a href="#">5NT1B_HUMAN</a>
<b>Immunogen</b>	The antiserum was produced against synthesized peptide derived from human NT5C1B at amino acid range 171-220
<b>Immunogen Region</b>	140-220 Internal
<b>Specificity</b>	NT5C1B polyclonal antibody (Cytosolic 5 NA-Nucleotidase 1b) binds to endogenous Cytosolic 5 NA-Nucleotidase 1b at the amino acid region 140-220 Internal.
<b>Immunogen Sequence</b>	



Immunofluorescence analysis of A549 cells, using NT5C1B Antibody. The picture on the right is blocked with the synthesized peptide.