

Anti-AIRE antibody (60-140 Internal) (STJ91518)

STJ91518

GENERAL INFORMATION

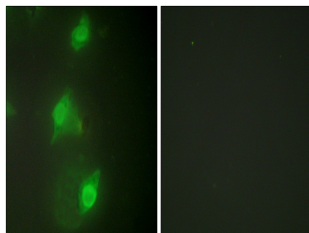
Product Type	Primary antibodies
Short Description	Rabbit polyclonal antibody anti-Autoimmune Regulator (60-140 Internal) is suitable for use in Western Blot, Immunofluorescence, Immunocytochemistry and ELISA research applications.
Applications	WB, IF, ICC, ELISA
Host/Source	Rabbit
Reactivity	Human, Mouse

PRODUCT PROPERTIES

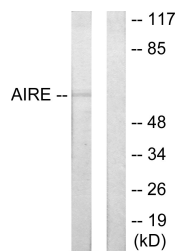
Clonality	Polyclonal
Clone ID	
Concentration	1 mg/mL
Conjugation	Unconjugated
Purification	The antibody was affinity-purified from rabbit anti-serum by affinity-chromatography.
Dilution Range	WB 1:500-1:2000 IF 1:200-1:1000 ELISA 1:10000
Formulation	PBS, 50% Glycerol, 0.5% BSA and 0.02% Sodium Azide.
Isotype	IgG
Storage Instruction	Store at -20°C for up to 1 year from the date of receipt, and avoid repeat freeze-thaw cycles.

TARGET INFORMATION

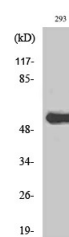
Gene ID	326
Gene Symbol	AIRE
Uniprot ID	AIRE_HUMAN
Immunogen	The antiserum was produced against synthesized peptide derived from human AIRE at amino acid range 91-140
Immunogen Region	60-140 Internal
Specificity	AIRE polyclonal antibody (Autoimmune Regulator) binds to endogenous Autoimmune Regulator at the amino acid region 60-140 Internal.
Immunogen Sequence	



Immunofluorescence analysis of HeLa cells, using AIRE Antibody. The picture on the right is blocked with the synthesized peptide.



Western blot analysis of lysates from 293 cells, using AIRE Antibody. The lane on the right is blocked with the synthesized peptide.



Western blot analysis of various cells using AIRE-1 Polyclonal Antibody diluted at 1: 1000

This product is suitable for in-vitro studies under the RESEARCH USE ONLY [RUO] licence. This product must not be used as for diagnostic or other medical purposes.
St John's Laboratory Ltd, Knowledge Dock Business Centre, University Way, London, E16 2RD | Tel: 0208 223 3081