

Anti-ITCH antibody (360-440) (STJ91517)

STJ91517

GENERAL INFORMATION

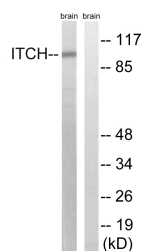
| | |
|--------------------------|--|
| Product Type | Primary antibodies |
| Short Description | Rabbit polyclonal antibody anti-E3 Ubiquitin-Protein Ligase Itchy Homolog (360-440) is suitable for use in Western Blot and ELISA research applications. |
| Applications | WB, ELISA |
| Host/Source | Rabbit |
| Reactivity | Human, Mouse |

PRODUCT PROPERTIES

| | |
|----------------------------|--|
| Clonality | Polyclonal |
| Clone ID | |
| Concentration | 1 mg/mL |
| Conjugation | Unconjugated |
| Purification | The antibody was affinity-purified from rabbit anti-serum by affinity-chromatography. |
| Dilution Range | WB 1:500-1:2000 ELISA 1:40000 |
| Formulation | PBS, 50% Glycerol, 0.5% BSA and 0.02% Sodium Azide. |
| Isotype | IgG |
| Storage Instruction | Store at -20°C for up to 1 year from the date of receipt, and avoid repeat freeze-thaw cycles. |

TARGET INFORMATION

| | |
|---------------------------|--|
| Gene ID | 83737 |
| Gene Symbol | ITCH |
| Uniprot ID | ITCH_HUMAN |
| Immunogen | The antiserum was produced against synthesized peptide derived from human ITCH at amino acid range 386-435 |
| Immunogen Region | 360-440 |
| Specificity | ITCH polyclonal antibody (E3 Ubiquitin-Protein Ligase Itchy Homolog) binds to endogenous E3 Ubiquitin-Protein Ligase Itchy Homolog at the amino acid region 360-440. |
| Immunogen Sequence | |



Western blot analysis of lysates from mouse brain, using ITCH Antibody. The lane on the right is blocked with the synthesized peptide.