

Anti-AIM2 antibody (30-110 Internal) (STJ91516)

STJ91516

GENERAL INFORMATION

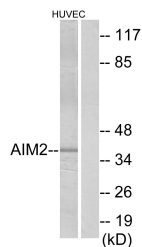
Product Type	Primary antibodies
Short Description	Rabbit polyclonal antibody anti-Interferon-Inducible Protein Aim2 (30-110 Internal) is suitable for use in Western Blot, Immunohistochemistry, Immunofluorescence, Immunocytochemistry and ELISA research applications.
Applications	WB, IHC-P, IF, ICC, ELISA
Host/Source	Rabbit
Reactivity	Human, Mouse, Rat

PRODUCT PROPERTIES

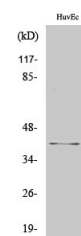
Clonality	Polyclonal
Clone ID	
Concentration	1 mg/mL
Conjugation	Unconjugated
Purification	The antibody was affinity-purified from rabbit anti-serum by affinity-chromatography.
Dilution Range	WB 1:500-1:2000 IHC 1:100-1:300 IF 1:200-1:1000 ELISA 1:40000
Formulation	PBS, 50% Glycerol, 0.5% BSA and 0.02% Sodium Azide.
Isotype	IgG
Storage Instruction	Store at -20°C for up to 1 year from the date of receipt, and avoid repeat freeze-thaw cycles.

TARGET INFORMATION

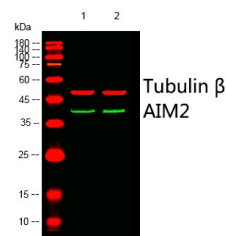
Gene ID	9447
Gene Symbol	AIM2
Uniprot ID	AIM2_HUMAN
Immunogen	The antiserum was produced against synthesized peptide derived from human AIM2 at amino acid range 51-100
Immunogen Region	30-110 Internal
Specificity	AIM2 polyclonal antibody (Interferon-Inducible Protein Aim2) binds to endogenous Interferon-Inducible Protein Aim2 at the amino acid region 30-110 Internal.
Immunogen Sequence	



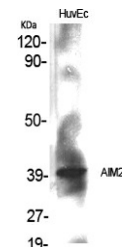
Western blot analysis of lysates from HUVEC cells, using AIM2 Antibody. The lane on the right is blocked with the synthesized peptide.



Western blot analysis of HuvEc cells using AIM2 Polyclonal Antibody cells nucleus extracted by Minute TM Cyttoplasmic and Nuclear Fractionation kit (SC-003, Inventibiotech, MN, USA).



Western blot analysis of lysates from 1) HuvEc, 2) Jurkat cells. (Green) primary antibody was diluted at 1:1000, 4°C over night, Dylight 800 secondary antibody (NA) was diluted at 1:10000, 37°C 1hour. (Red) Tubulin Beta monoclonal antibody (BG3) (STJ96632) antibody was diluted at 1:5000 as loading control, 4°C over night, Dylight 680 secondary antibody (NA) was diluted at 1:10000, 37°C 1hour.



Western blot analysis of various cells using AIM2 Polyclonal Antibody cells nucleus extracted by Minute TM Cyttoplasmic and Nuclear Fractionation kit (SC-003, Inventibiotech, MN, USA).

This product is suitable for in-vitro studies under the RESEARCH USE ONLY [RUO] licence. This product must not be used as for diagnostic or other medical purposes.

St John's Laboratory Ltd, Knowledge Dock Business Centre, University Way, London, E16 2RD | Tel: 0208 223 3081