

Anti-AIG1 antibody (170-250 C-Term) (STJ91515)

STJ91515

GENERAL INFORMATION

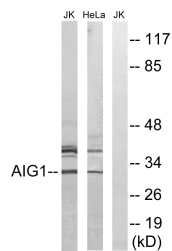
Product Type	Primary antibodies
Short Description	Rabbit polyclonal antibody anti-Androgen-Induced Gene 1 Protein (170-250 C-Term) is suitable for use in Western Blot and ELISA research applications.
Applications	WB, ELISA
Host/Source	Rabbit
Reactivity	Human, Rat, Mouse

PRODUCT PROPERTIES

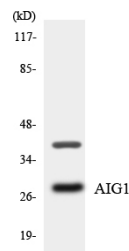
Clonality	Polyclonal
Clone ID	
Concentration	1 mg/mL
Conjugation	Unconjugated
Purification	The antibody was affinity-purified from rabbit anti-serum by affinity-chromatography.
Dilution Range	WB 1:500-1:2000 ELISA 1:40000
Formulation	PBS, 50% Glycerol, 0.5% BSA and 0.02% Sodium Azide.
Isotype	IgG
Storage	Store at -20°C for up to 1 year from the date of receipt, and avoid repeat freeze-thaw cycles.
Instruction	

TARGET INFORMATION

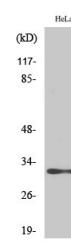
Gene ID	51390
Gene Symbol	AIG1
Uniprot ID	AIG1_HUMAN
Immunogen	The antiserum was produced against synthesized peptide derived from human AIG1 at amino acid range 196-245
Immunogen Region	170-250 C-Term
Specificity	AIG1 polyclonal antibody (Androgen-Induced Gene 1 Protein) binds to endogenous Androgen-Induced Gene 1 Protein at the amino acid region 170-250 C-Term.
Immunogen Sequence	



Western blot analysis of lysates from HeLa and Jurkat cells, using AIG1 Antibody. The lane on the right is blocked with the synthesized peptide.



Western blot analysis of the lysates from HT-29 cells using AIG1 antibody.



Western blot analysis of various cells using AIG-1 Polyclonal Antibody

This product is suitable for in-vitro studies under the RESEARCH USE ONLY [RUO] licence. This product must not be used as for diagnostic or other medical purposes.
St John's Laboratory Ltd, Knowledge Dock Business Centre, University Way, London, E16 2RD | Tel: 0208 223 3081