

Anti-PHYKPL antibody (310-390 C-Term) (STJ91509)

STJ91509

GENERAL INFORMATION

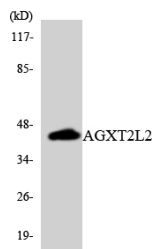
Product Type	Primary antibodies
Short Description	Rabbit polyclonal antibody anti-5-Phosphohydroxy-L-Lysine Phospho-Lyase (310-390 C-Term) is suitable for use in Western Blot, Immunohistochemistry, Immunofluorescence and ELISA research applications.
Applications	WB, IHC-P, IF-P, ELISA
Host/Source	Rabbit
Reactivity	Human, Mouse, Rat

PRODUCT PROPERTIES

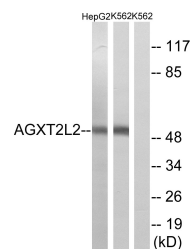
Clonality	Polyclonal
Clone ID	
Concentration	1 mg/mL
Conjugation	Unconjugated
Purification	The antibody was affinity-purified from rabbit anti-serum by affinity-chromatography.
Dilution Range	WB 1:500-1:2000 IHC 1:100-1:300 ELISA 1:10000
Formulation	PBS, 50% Glycerol, 0.5% BSA and 0.02% Sodium Azide.
Isotype	IgG
Storage Instruction	Store at 20°C for up to 1 year from the date of receipt, and avoid repeat freeze-thaw cycles.

TARGET INFORMATION

Gene ID	85007
Gene Symbol	PHYKPL
Uniprot ID	AT2L2_HUMAN
Immunogen	The antiserum was produced against synthesized peptide derived from human AGXT2L2 at amino acid range 341-390
Immunogen Region	310-390 C-Term
Specificity	PHYKPL polyclonal antibody (5-Phosphohydroxy-L-Lysine Phospho-Lyase) binds to endogenous 5-Phosphohydroxy-L-Lysine Phospho-Lyase at the amino acid region 310-390 C-Term.
Immunogen Sequence	



Western blot analysis of the lysates from HUVEC cells using AGXT2L2 antibody.



Western blot analysis of lysates from K562 and HepG2 cells, using AGXT2L2 Antibody. The lane on the right is blocked with the synthesized peptide.

This product is suitable for in-vitro studies under the RESEARCH USE ONLY [RUO] licence. This product must not be used as for diagnostic or other medical purposes.
St John's Laboratory Ltd, Knowledge Dock Business Centre, University Way, London, E16 2RD | Tel: 0208 223 3081