

Anti-AFF1 antibody (1-80 N-Term) (STJ91505)

STJ91505

GENERAL INFORMATION

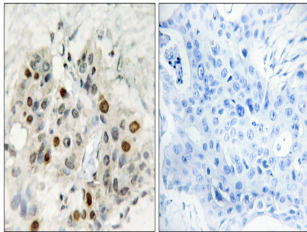
Product Type	Primary antibodies
Short Description	Rabbit polyclonal antibody anti-Af4/Fmr2 Family Member 1 (1-80 N-Term) is suitable for use in Immunohistochemistry, Immunofluorescence, Western Blot and ELISA research applications.
Applications	IHC-P, IF-P, WB, ELISA
Host/Source	Rabbit
Reactivity	Human, Mouse

PRODUCT PROPERTIES

Clonality	Polyclonal
Clone ID	
Concentration	1 mg/mL
Conjugation	Unconjugated
Purification	The antibody was affinity-purified from rabbit anti-serum by affinity-chromatography.
Dilution Range	WB 1:500-2000 IHC 1:100-1:300 ELISA 1:20000
Formulation	PBS, 50% Glycerol, 0.5% BSA and 0.02% Sodium Azide.
Isotype	IgG
Storage Instruction	Store at -20°C for up to 1 year from the date of receipt, and avoid repeat freeze-thaw cycles.

TARGET INFORMATION

Gene ID	4299
Gene Symbol	AFF1
Uniprot ID	AFF1_HUMAN
Immunogen	The antiserum was produced against synthesized peptide derived from human AF4 at amino acid range 1-50
Immunogen Region	1-80 N-Term
Specificity	AFF1 polyclonal antibody (Af4/Fmr2 Family Member 1) binds to endogenous Af4/Fmr2 Family Member 1 at the amino acid region 1-80 N-Term.
Immunogen Sequence	



Immunohistochemistry analysis of paraffin-embedded human breast carcinoma tissue, using AF4 Antibody. The picture on the right is blocked with the synthesized peptide.