

Anti-MLLT10 antibody (180-260 Internal) (STJ91504)

STJ91504

GENERAL INFORMATION

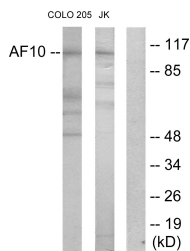
Product Type	Primary antibodies
Short Description	Rabbit polyclonal antibody anti-Protein Af-10 (180-260 Internal) is suitable for use in Western Blot, Immunohistochemistry, Immunofluorescence, Immunocytochemistry and ELISA research applications.
Applications	WB, IHC-P, IF, ICC, ELISA
Host/Source	Rabbit
Reactivity	Human, Mouse

PRODUCT PROPERTIES

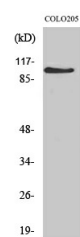
Clonality	Polyclonal
Clone ID	
Concentration	1 mg/mL
Conjugation	Unconjugated
Purification	The antibody was affinity-purified from rabbit anti-serum by affinity-chromatography.
Dilution Range	WB 1:500-1:2000 IHC 1:100-1:300 IF 1:200-1:1000 ELISA 1:10000
Formulation	PBS, 50% Glycerol, 0.5% BSA and 0.02% Sodium Azide.
Isotype	IgG
Storage Instruction	Store at -20°C for up to 1 year from the date of receipt, and avoid repeat freeze-thaw cycles.

TARGET INFORMATION

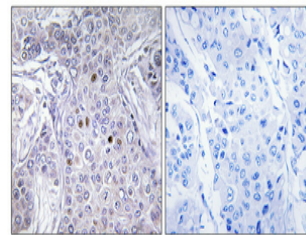
Gene ID	8028
Gene Symbol	MLLT10
Uniprot ID	AF10_HUMAN
Immunogen	The antiserum was produced against synthesized peptide derived from human AF10 at amino acid range 211-260
Immunogen Region	180-260 Internal
Specificity	MLLT10 polyclonal antibody (Protein Af-10) binds to endogenous Protein Af-10 at the amino acid region 180-260 Internal.
Immunogen Sequence	



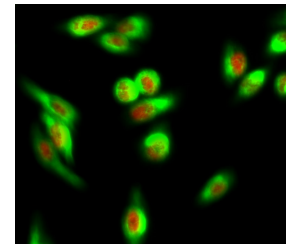
Western blot analysis of lysates from COLO205 and Jurkat cells, using AF10 Antibody. The lane on the right is blocked with the synthesized peptide.



Western blot analysis of various cells using AF-10 Polyclonal Antibody diluted at 1: 1000



Immunohistochemical analysis of paraffin-embedded Human breast cancer. Antibody was diluted at 1:100 (4°C overnight). High-pressure and temperature Tris-EDTA, pH8.0 was used for antigen retrieval. Negative control (right) obtained from antibody was pre-absorbed by immunogen peptide.



Immunofluorescence analysis of HeLa cell. 1. AF-10 Polyclonal Antibody (red) was diluted at 1:200 (4°C overnight). COX IV monoclonal antibody (6C5) (green) was diluted at 1:200 (4°C overnight). 2. Goat Anti Rabbit Alexa Fluor 594 Catalog: (NA was diluted at 1:1000 (room temperature, 50min). Goat Anti Mouse Alexa Fluor 488 Catalog: (NA was diluted at 1:1000 (room temperature, 50min).

This product is suitable for in-vitro studies under the RESEARCH USE ONLY [RUO] licence. This product must not be used as for diagnostic or other medical purposes.
St John's Laboratory Ltd, Knowledge Dock Business Centre, University Way, London, E16 2RD | Tel: 0208 223 3081