

Anti-ADH7 antibody (180-260 Internal) (STJ91499)

STJ91499

GENERAL INFORMATION

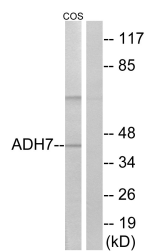
Product Type	Primary antibodies
Short Description	Rabbit polyclonal antibody anti-All-Trans-Retinol Dehydrogenase Nad (+ Adh7 (180-260 Internal) is suitable for use in Western Blot and ELISA research applications.
Applications	WB, ELISA
Host/Source	Rabbit
Reactivity	Human, Monkey

PRODUCT PROPERTIES

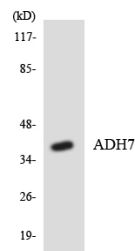
Clonality	Polyclonal
Clone ID	
Concentration	1 mg/mL
Conjugation	Unconjugated
Purification	The antibody was affinity-purified from rabbit anti-serum by affinity-chromatography.
Dilution Range	WB 1:500-1:2000 ELISA 1:20000
Formulation	PBS, 50% Glycerol, 0.5% BSA and 0.02% Sodium Azide.
Isotype	IgG
Storage Instruction	Store at -20°C for up to 1 year from the date of receipt, and avoid repeat freeze-thaw cycles.

TARGET INFORMATION

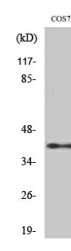
Gene ID	131
Gene Symbol	ADH7
Uniprot ID	ADH7_HUMAN
Immunogen	The antiserum was produced against synthesized peptide derived from human ADH7 at amino acid range 211-260
Immunogen Region	180-260 Internal
Specificity	ADH7 polyclonal antibody (All-Trans-Retinol Dehydrogenase Nad (+ Adh7) binds to endogenous All-Trans-Retinol Dehydrogenase Nad (+ Adh7 at the amino acid region 180-260 Internal.
Immunogen Sequence	



Western blot analysis of lysates from COS7 cells, using ADH7 Antibody. The lane on the right is blocked with the synthesized peptide.



Western blot analysis of the lysates from HeLa cells using ADH7 antibody.



Western blot analysis of various cells using ADH7 Polyclonal Antibody.