

Anti-ADORA2B antibody (200-280 C-Term) (STJ91496)

STJ91496

GENERAL INFORMATION

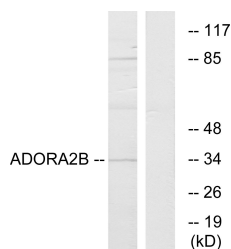
Product Type	Primary antibodies
Short Description	Rabbit polyclonal antibody anti-Adenosine Receptor A2b (200-280 C-Term) is suitable for use in Western Blot, Immunofluorescence, Immunocytochemistry and ELISA research applications.
Applications	WB, IF, ICC, ELISA
Host/Source	Rabbit
Reactivity	Human, Rat, Mouse

PRODUCT PROPERTIES

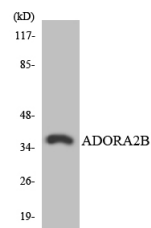
Clonality	Polyclonal
Clone ID	
Concentration	1 mg/mL
Conjugation	Unconjugated
Purification	The antibody was affinity-purified from rabbit anti-serum by affinity-chromatography.
Dilution Range	WB 1:500-1:2000 IF 1:200-1:1000 ELISA 1:5000
Formulation	PBS, 50% Glycerol, 0.5% BSA and 0.02% Sodium Azide.
Isotype	IgG
Storage Instruction	Store at -20°C for up to 1 year from the date of receipt, and avoid repeat freeze-thaw cycles.

TARGET INFORMATION

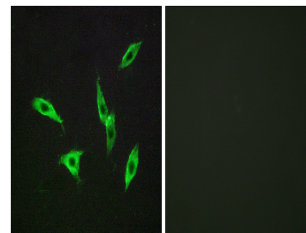
Gene ID	136
Gene Symbol	ADORA2B
Uniprot ID	AA2BR_HUMAN
Immunogen	The antiserum was produced against synthesized peptide derived from human ADORA2B at amino acid range 231-280
Immunogen Region	200-280 C-Term
Specificity	ADORA2B polyclonal antibody (Adenosine Receptor A2b) binds to endogenous Adenosine Receptor A2b at the amino acid region 200-280 C-Term.
Immunogen Sequence	



Western blot analysis of lysates from Jurkat cells, using ADORA2B Antibody. The lane on the right is blocked with the synthesized peptide.



Western blot analysis of the lysates from HT-29 cells using ADORA2B antibody.



Immunofluorescence analysis of LOVO cells, using ADORA2B Antibody. The picture on the right is blocked with the synthesized peptide.

This product is suitable for in-vitro studies under the RESEARCH USE ONLY [RUO] licence. This product must not be used as for diagnostic or other medical purposes.
St John's Laboratory Ltd, Knowledge Dock Business Centre, University Way, London, E16 2RD | Tel: 0208 223 3081