

Anti-ADD2 antibody (440-520 Internal) (STJ91491)

STJ91491

GENERAL INFORMATION

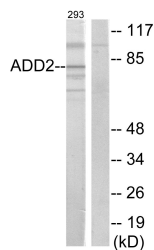
Product Type	Primary antibodies
Short Description	Rabbit polyclonal antibody anti-Beta-Adducin (440-520 Internal) is suitable for use in Western Blot, Immunofluorescence, Immunocytochemistry and ELISA research applications.
Applications	WB, IF, ICC, ELISA
Host/Source	Rabbit
Reactivity	Human, Mouse, Rat

PRODUCT PROPERTIES

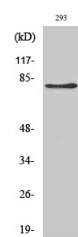
Clonality	Polyclonal
Clone ID	
Concentration	1 mg/mL
Conjugation	Unconjugated
Purification	The antibody was affinity-purified from rabbit anti-serum by affinity-chromatography.
Dilution Range	WB 1:500-1:2000 IF 1:200-1:1000 ELISA 1:5000
Formulation	PBS, 50% Glycerol, 0.5% BSA and 0.02% Sodium Azide.
Isotype	IgG
Storage Instruction	Store at -20°C for up to 1 year from the date of receipt, and avoid repeat freeze-thaw cycles.

TARGET INFORMATION

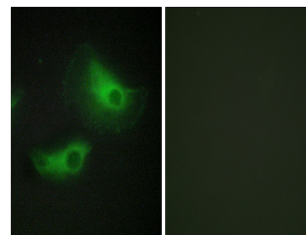
Gene ID	119
Gene Symbol	ADD2
Uniprot ID	ADD2_HUMAN
Immunogen	The antiserum was produced against synthesized peptide derived from human ADD2 at amino acid range 471-520
Immunogen Region	440-520 Internal
Specificity	ADD2 polyclonal antibody (Beta-Adducin) binds to endogenous Beta-Adducin at the amino acid region 440-520 Internal.
Immunogen Sequence	



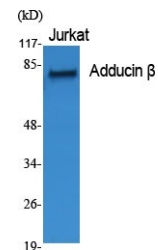
Western blot analysis of lysates from 293 cells, using ADD2 Antibody. The lane on the right is blocked with the synthesized peptide.



Western blot analysis of 293 cells using Adducin Beta Polyclonal Antibody



Immunofluorescence analysis of HeLa cells, using ADD2 Antibody. The picture on the right is blocked with the synthesized peptide.



Western blot analysis of various cells using Adducin Beta Polyclonal Antibody