

## Anti-Adducin antibody (670-750) (STJ91490)

STJ91490

### GENERAL INFORMATION

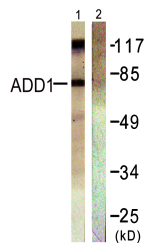
<b>Product Type</b>	Primary antibodies
<b>Short Description</b>	Rabbit polyclonal antibody anti-Alpha-adducin and Beta-adducin (670-750) is suitable for use in Western Blot, Immunohistochemistry, Immunoprecipitation, Immunofluorescence, Immunocytochemistry and ELISA research applications.
<b>Applications</b>	WB, IHC-P, IP, IF, ICC, ELISA
<b>Host/Source</b>	Rabbit
<b>Reactivity</b>	Human, Mouse, Rat

### PRODUCT PROPERTIES

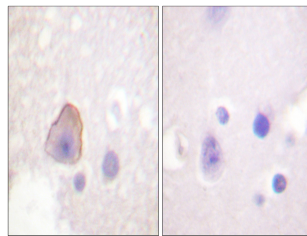
<b>Clonality</b>	Polyclonal
<b>Clone ID</b>	
<b>Concentration</b>	1 mg/mL
<b>Conjugation</b>	Unconjugated
<b>Purification</b>	The antibody was affinity-purified from rabbit anti-serum by affinity-chromatography.
<b>Dilution Range</b>	WB 1:500-1:2000 IHC 1:100-1:300 IP 2-5 ug/mg IF 1:200-1:1000 ELISA 1:40000
<b>Formulation</b>	PBS, 50% Glycerol, 0.5% BSA and 0.02% Sodium Azide.
<b>Isotype</b>	IgG
<b>Storage Instruction</b>	Store at -20°C for up to 1 year from the date of receipt, and avoid repeat freeze-thaw cycles.

### TARGET INFORMATION

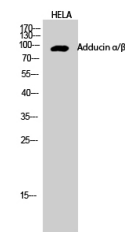
<b>Gene ID</b>	<a href="#">119</a> <a href="#">118</a>
<b>Gene Symbol</b>	<a href="#">ADD2</a> <a href="#">ADD1</a>
<b>Uniprot ID</b>	<a href="#">ADDB_HUMAN</a> <a href="#">ADDA_HUMAN</a>
<b>Immunogen</b>	The antiserum was produced against synthesized peptide derived from human ADD1 at amino acid range 688-737
<b>Immunogen Region</b>	670-750
<b>Specificity</b>	Adducin polyclonal antibody (Alpha-adducin and Beta-adducin) binds to endogenous Alpha-adducin and Beta-adducin at the amino acid region 670-750.
<b>Immunogen Sequence</b>	



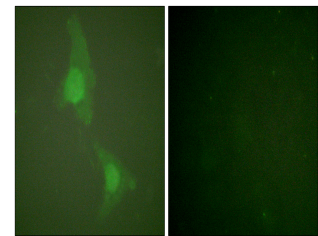
Western blot analysis of lysates from HeLa cells, treated with Forskolin 40nM 30', using ADD1 Antibody. The lane on the right is blocked with the synthesized peptide.



Immunohistochemistry analysis of paraffin-embedded human brain tissue, using ADD1 Antibody. The picture on the right is blocked with the synthesized peptide.



Western blot analysis of HELA cells using Adducin Alpha/Beta Polyclonal Antibody diluted at 1: 1000



Immunofluorescence analysis of HeLa cells, using ADD1 Antibody. The picture on the right is blocked with the synthesized peptide.

This product is suitable for in-vitro studies under the RESEARCH USE ONLY [RUO] licence. This product must not be used as for diagnostic or other medical purposes.  
St John's Laboratory Ltd, Knowledge Dock Business Centre, University Way, London, E16 2RD | Tel: 0208 223 3081