

Anti-ADCK2 antibody (210-290 Internal) (STJ91486)

STJ91486

GENERAL INFORMATION

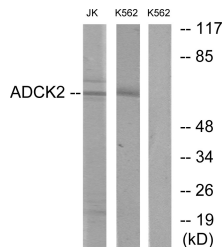
Product Type	Primary antibodies
Short Description	Rabbit polyclonal antibody anti-Uncharacterized Aarf Domain-Containing Protein Kinase 2 (210-290 Internal) is suitable for use in Western Blot, Immunohistochemistry, Immunofluorescence, Immunocytochemistry and ELISA research applications.
Applications	WB, IHC-P, IF, ICC, ELISA
Host/Source	Rabbit
Reactivity	Human, Rat, Mouse

PRODUCT PROPERTIES

Clonality	Polyclonal
Clone ID	
Concentration	1 mg/mL
Conjugation	Unconjugated
Purification	The antibody was affinity-purified from rabbit anti-serum by affinity-chromatography.
Dilution Range	WB 1:500-1:2000 IHC 1:100-1:300 IF 1:200-1:1000 ELISA 1:10000
Formulation	PBS, 50% Glycerol, 0.5% BSA and 0.02% Sodium Azide.
Isotype	IgG
Storage Instruction	Store at -20°C for up to 1 year from the date of receipt, and avoid repeat freeze-thaw cycles.

TARGET INFORMATION

Gene ID	90956
Gene Symbol	ADCK2
Uniprot ID	ADCK2_HUMAN
Immunogen	The antiserum was produced against synthesized peptide derived from human ADCK2 at amino acid range 241-290
Immunogen Region	210-290 Internal
Specificity	ADCK2 polyclonal antibody (Uncharacterized Aarf Domain-Containing Protein Kinase 2) binds to endogenous Uncharacterized Aarf Domain-Containing Protein Kinase 2 at the amino acid region 210-290 Internal.
Immunogen Sequence	



Western blot analysis of lysates from Jurkat and K562 cells, using ADCK2 Antibody. The lane on the right is blocked with the synthesized peptide.

This product is suitable for in-vitro studies under the RESEARCH USE ONLY [RUO] licence. This product must not be used as for diagnostic or other medical purposes.
St John's Laboratory Ltd, Knowledge Dock Business Centre, University Way, London, E16 2RD | Tel: 0208 223 3081