

Anti-Actin antibody (300-380 C-Term) (STJ91461)

STJ91461

GENERAL INFORMATION

Product Type	Primary antibodies
Short Description	Rabbit polyclonal antibody anti-Actin, cytoplasmic 1 and Putative beta-actin-like protein 3 and Actin, cytoplasmic 2 (300-380 C-Term) is suitable for use in Western Blot, Immunohistochemistry, Immunofluorescence and ELISA research applications.
Applications	WB, IHC-P, IF-P, ELISA
Host/Source	Rabbit
Reactivity	Human, Mouse, Rat

PRODUCT PROPERTIES

Clonality	Polyclonal
Clone ID	
Concentration	1 mg/mL
Conjugation	Unconjugated
Purification	The antibody was affinity-purified from rabbit anti-serum by affinity-chromatography.
Dilution Range	WB 1:500-1:2000 IHC 1:100-1:300 ELISA 1:10000
Formulation	PBS, 50% Glycerol, 0.5% BSA and 0.02% Sodium Azide.
Isotype	IgG
Storage Instruction	Store at -20°C for up to 1 year from the date of receipt, and avoid repeat freeze-thaw cycles.

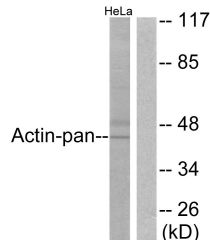
TARGET INFORMATION

Gene ID NA
71
60
POTEKP
ACTG1
ACTBM_HUMAN
ACTG_HUMAN
ACTB_HUMAN

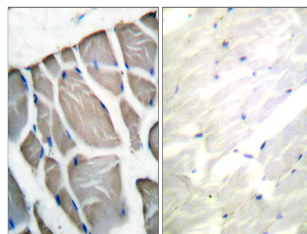
Immunogen The antiserum was produced against synthesized peptide derived from human Actin at amino acid range 326-375
Immunogen Region 300-380 C-Term

Specificity Actin polyclonal antibody (Actin, cytoplasmic 1 and Putative beta-actin-like protein 3 and Actin, cytoplasmic 2) binds to endogenous Actin, cytoplasmic 1 and Putative beta-actin-like protein 3 and Actin, cytoplasmic 2 at the amino acid region 300-380

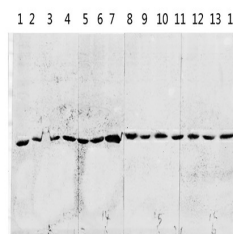
Immunogen Sequence



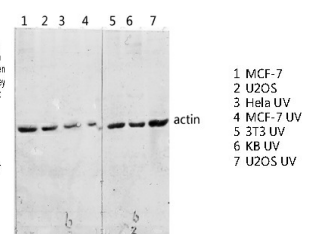
Western blot analysis of lysates from HeLa cells, using Actin-pan Antibody. The lane on the right is blocked with the synthesized peptide.



Immunohistochemistry analysis of paraffin-embedded human skeletal muscle tissue, using Actin-pan Antibody. The picture on the right is blocked with the synthesized peptide.



Western blot analysis of various lysis using Actin Polyclonal Antibody diluted at 1: 2000. Secondary antibody was diluted at 1:20000



Western blot analysis of various lysis using Actin Polyclonal Antibody diluted at 1: 2000. Secondary antibody was diluted at 1:20000

This product is suitable for in-vitro studies under the RESEARCH USE ONLY [RUO] licence. This product must not be used as for diagnostic or other medical purposes.

St John's Laboratory Ltd, Knowledge Dock Business Centre, University Way, London, E16 2RD | Tel: 0208 223 3081