

Anti-SLC27A5 antibody (450-530 Internal) (STJ91460)

STJ91460

GENERAL INFORMATION

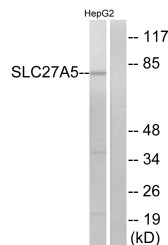
Product Type	Primary antibodies
Short Description	Rabbit polyclonal antibody anti-Bile Acyl-Coa Synthetase (450-530 Internal) is suitable for use in Western Blot, Immunohistochemistry, Immunofluorescence, Immunocytochemistry and ELISA research applications.
Applications	WB, IHC-P, IF, ICC, ELISA
Host/Source	Rabbit
Reactivity	Human, Rat, Mouse

PRODUCT PROPERTIES

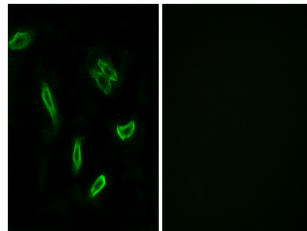
Clonality	Polyclonal
Clone ID	
Concentration	1 mg/mL
Conjugation	Unconjugated
Purification	The antibody was affinity-purified from rabbit anti-serum by affinity-chromatography.
Dilution Range	WB 1:500-1:2000 IHC 1:100-1:300 IF 1:200-1:1000 ELISA 1:40000
Formulation	PBS, 50% Glycerol, 0.5% BSA and 0.02% Sodium Azide.
Isotype	IgG
Storage Instruction	Store at -20°C for up to 1 year from the date of receipt, and avoid repeat freeze-thaw cycles.

TARGET INFORMATION

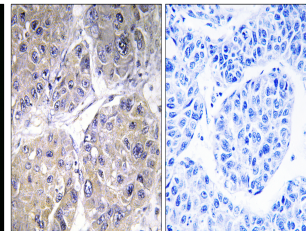
Gene ID	10998
Gene Symbol	SLC27A5
Uniprot ID	S27A5_HUMAN
Immunogen	The antiserum was produced against synthesized peptide derived from human SLC27A5 at amino acid range 481-530
Immunogen Region	450-530 Internal
Specificity	SLC27A5 polyclonal antibody (Bile Acyl-Coa Synthetase) binds to endogenous Bile Acyl-Coa Synthetase at the amino acid region 450-530 Internal.
Immunogen Sequence	



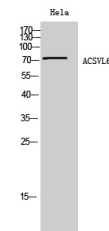
Western blot analysis of lysates from HepG2 cells, using SLC27A5 Antibody. The lane on the right is blocked with the synthesized peptide.



Immunofluorescence analysis of A549 cells, using SLC27A5 Antibody. The picture on the right is blocked with the synthesized peptide.



Immunohistochemistry analysis of paraffin-embedded human liver carcinoma tissue, using SLC27A5 Antibody. The picture on the right is blocked with the synthesized peptide.



Western blot analysis of HeLa cells using ACSVL6 Polyclonal Antibody diluted at 1: 1000

This product is suitable for in-vitro studies under the RESEARCH USE ONLY [RUO] licence. This product must not be used as for diagnostic or other medical purposes.
St John's Laboratory Ltd, Knowledge Dock Business Centre, University Way, London, E16 2RD | Tel: 0208 223 3081