

Anti-ACSL6 antibody (470-550 Internal) (STJ91457)

STJ91457

GENERAL INFORMATION

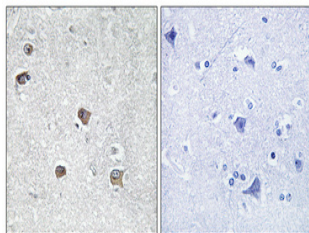
| | |
|--------------------------|---|
| Product Type | Primary antibodies |
| Short Description | Rabbit polyclonal antibody anti-Long-Chain-Fatty-Acid--Coa Ligase 6 (470-550 Internal) is suitable for use in Western Blot, Immunohistochemistry, Immunofluorescence and ELISA research applications. |
| Applications | WB, IHC-P, IF-P, ELISA |
| Host/Source | Rabbit |
| Reactivity | Human, Mouse, Rat |

PRODUCT PROPERTIES

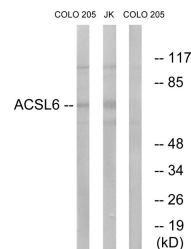
| | |
|----------------------------|--|
| Clonality | Polyclonal |
| Clone ID | |
| Concentration | 1 mg/mL |
| Conjugation | Unconjugated |
| Purification | The antibody was affinity-purified from rabbit anti-serum by affinity-chromatography. |
| Dilution Range | WB 1:500-1:2000 IHC 1:100-1:300 ELISA 1:40000 |
| Formulation | PBS, 50% Glycerol, 0.5% BSA and 0.02% Sodium Azide. |
| Isotype | IgG |
| Storage Instruction | Store at -20°C for up to 1 year from the date of receipt, and avoid repeat freeze-thaw cycles. |

TARGET INFORMATION

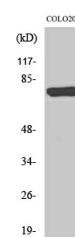
| | |
|---------------------------|--|
| Gene ID | 23305 |
| Gene Symbol | ACSL6 |
| Uniprot ID | ACSL6_HUMAN |
| Immunogen | The antiserum was produced against synthesized peptide derived from human ACSL6 at amino acid range 499-548 |
| Immunogen Region | 470-550 Internal |
| Specificity | ACSL6 polyclonal antibody (Long-Chain-Fatty-Acid--Coa Ligase 6) binds to endogenous Long-Chain-Fatty-Acid--Coa Ligase 6 at the amino acid region 470-550 Internal. |
| Immunogen Sequence | |



Immunohistochemical analysis of paraffin-embedded Human brain. Antibody was diluted at 1:100 (4°C overnight). High-pressure and temperature Tris-EDTA, pH8.0 was used for antigen retrieval. Negative control (right) obtained from antibody was pre-absorbed by immunogen peptide.



Western blot analysis of lysates from COLO and Jurkat cells, using ACSL6 Antibody. The lane on the right is blocked with the synthesized peptide.



Western blot analysis of various cells using ACSL6 Polyclonal Antibody diluted at 1: 1000

This product is suitable for in-vitro studies under the RESEARCH USE ONLY [RUO] licence. This product must not be used as for diagnostic or other medical purposes.
St John's Laboratory Ltd, Knowledge Dock Business Centre, University Way, London, E16 2RD | Tel: 0208 223 3081