

Anti-ADIPOQ antibody (Internal) (STJ91456)

STJ91456

GENERAL INFORMATION

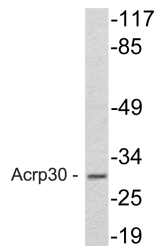
Product Type	Primary antibodies
Short Description	Rabbit polyclonal antibody anti-Adiponectin (Internal) is suitable for use in Western Blot and ELISA research applications.
Applications	WB, ELISA
Host/Source	Rabbit
Reactivity	Human, Mouse, Rat

PRODUCT PROPERTIES

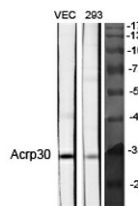
Clonality	Polyclonal
Clone ID	
Concentration	1 mg/mL
Conjugation	Unconjugated
Purification	The antibody was affinity-purified from rabbit anti-serum by affinity-chromatography.
Dilution Range	WB 1:500-1:2000 ELISA 1:10000
Formulation	PBS, 50% Glycerol, 0.5% BSA and 0.02% Sodium Azide.
Isotype	IgG
Storage Instruction	Store at -20°C for up to 1 year from the date of receipt, and avoid repeat freeze-thaw cycles.

TARGET INFORMATION

Gene ID	9370
Gene Symbol	ADIPOQ
Uniprot ID	ADIPO_HUMAN
Immunogen	The antiserum was produced against synthesized peptide derived from human Acrp30 at amino acid range 6-55
Immunogen Region	Internal
Specificity	ADIPOQ polyclonal antibody (Adiponectin) binds to endogenous Adiponectin at the amino acid region Internal.
Immunogen Sequence	



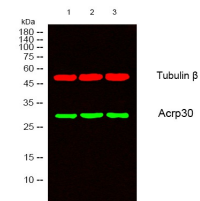
Western blot analysis of lysate from HeLa cells, using Acrp30 antibody.



Western blot analysis of various cells using Acrp30 Polyclonal Antibody diluted at 1: 1000



Western blot analysis of HeLa cells using Acrp30 Polyclonal Antibody diluted at 1: 1000



Western blot analysis of lysates from 1) HeLa, 2) VEC, 3) 293 cells, (Green) primary antibody was diluted at 1:1000, 4°C over night, secondary antibody (cat: NA) was diluted at 1:10000, 37°C 1hour. (Red) Tubulin Beta monoclonal antibody (5G3) (cat: (STJ96932) antibody was diluted at 1:5000 as loading control, 4°C over night, secondary antibody (cat: NA) was diluted at 1:10000, 37°C 1hour.

This product is suitable for in-vitro studies under the RESEARCH USE ONLY [RUO] licence. This product must not be used as for diagnostic or other medical purposes.
St John's Laboratory Ltd, Knowledge Dock Business Centre, University Way, London, E16 2RD | Tel: 0208 223 3081