

Anti-CHRNA1 antibody (10-90 N-Term) (STJ91449)

STJ91449

GENERAL INFORMATION

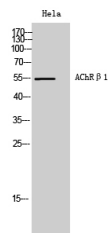
Product Type	Primary antibodies
Short Description	Rabbit polyclonal antibody anti-Acetylcholine Receptor Subunit Beta (10-90 N-Term) is suitable for use in Western Blot and ELISA research applications.
Applications	WB, ELISA
Host/Source	Rabbit
Reactivity	Human, Mouse, Rat

PRODUCT PROPERTIES

Clonality	Polyclonal
Clone ID	
Concentration	1 mg/mL
Conjugation	Unconjugated
Purification	The antibody was affinity-purified from rabbit anti-serum by affinity-chromatography.
Dilution Range	WB 1:500-1:2000 ELISA 1:5000
Formulation	PBS, 50% Glycerol, 0.5% BSA and 0.02% Sodium Azide.
Isotype	IgG
Storage	Store at -20°C for up to 1 year from the date of receipt, and avoid repeat freeze-thaw cycles.
Instruction	

TARGET INFORMATION

Gene ID	1140
Gene Symbol	CHRNA1
Uniprot ID	ACHB_HUMAN
Immunogen	The antiserum was produced against synthesized peptide derived from human CHRNA1 at amino acid range 41-90
Immunogen Region	10-90 N-Term
Specificity	CHRNA1 polyclonal antibody (Acetylcholine Receptor Subunit Beta) binds to endogenous Acetylcholine Receptor Subunit Beta at the amino acid region 10-90 N-Term.
Immunogen Sequence	



Western blot analysis of HeLa cells using AChR Beta 1 Polyclonal Antibody

This product is suitable for in-vitro studies under the RESEARCH USE ONLY [RUO] licence. This product must not be used as for diagnostic or other medical purposes.
St John's Laboratory Ltd, Knowledge Dock Business Centre, University Way, London, E16 2RD | Tel: 0208 223 3081