

Anti-CHRNA3 antibody (Internal) (STJ91447)

STJ91447

GENERAL INFORMATION

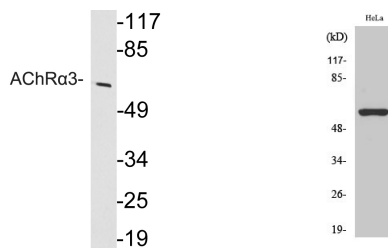
Product Type	Primary antibodies
Short Description	Rabbit polyclonal antibody anti-Neuronal Acetylcholine Receptor Subunit Alpha-3 (Internal) is suitable for use in Western Blot and ELISA research applications.
Applications	WB, ELISA
Host/Source	Rabbit
Reactivity	Human, Mouse, Rat

PRODUCT PROPERTIES

Clonality	Polyclonal
Clone ID	
Concentration	1 mg/mL
Conjugation	Unconjugated
Purification	The antibody was affinity-purified from rabbit anti-serum by affinity-chromatography.
Dilution Range	WB 1:500-1:2000 ELISA 1:10000
Formulation	PBS, 50% Glycerol, 0.5% BSA and 0.02% Sodium Azide.
Isotype	IgG
Storage	Store at -20°C for up to 1 year from the date of receipt, and avoid repeat freeze-thaw cycles.
Instruction	

TARGET INFORMATION

Gene ID	1136
Gene Symbol	CHRNA3
Uniprot ID	ACHA3_HUMAN
Immunogen	The antiserum was produced against synthesized peptide derived from human AChRalpha3 at amino acid range 90-139
Immunogen Region	Internal
Specificity	CHRNA3 polyclonal antibody (Neuronal Acetylcholine Receptor Subunit Alpha-3) binds to endogenous Neuronal Acetylcholine Receptor Subunit Alpha-3 at the amino acid region Internal.
Immunogen Sequence	



Western blot analysis of lysate from HeLa cells, using AChR Alpha 3 antibody.

Western blot analysis of various cells using AChR Alpha 3 Polyclonal Antibody

This product is suitable for in-vitro studies under the RESEARCH USE ONLY [RUO] licence. This product must not be used as for diagnostic or other medical purposes.
St John's Laboratory Ltd, Knowledge Dock Business Centre, University Way, London, E16 2RD | Tel: 0208 223 3081