

Anti-CHRNA10 antibody (370-450 C-Term) (STJ91446)

STJ91446

GENERAL INFORMATION

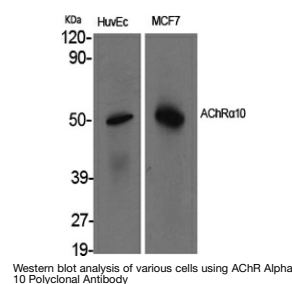
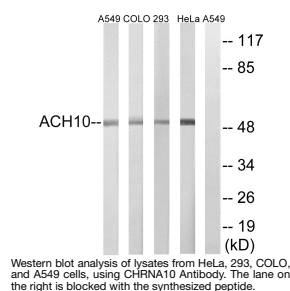
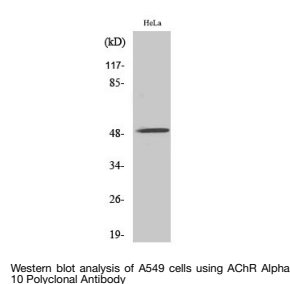
| | |
|--------------------------|--|
| Product Type | Primary antibodies |
| Short Description | Rabbit polyclonal antibody anti-Neuronal Acetylcholine Receptor Subunit Alpha-10 (370-450 C-Term) is suitable for use in Western Blot and ELISA research applications. |
| Applications | WB, ELISA |
| Host/Source | Rabbit |
| Reactivity | Human, Mouse, Rat |

PRODUCT PROPERTIES

| | |
|----------------------|--|
| Clonality | Polyclonal |
| Clone ID | |
| Concentration | 1 mg/mL |
| Conjugation | Unconjugated |
| Purification | The antibody was affinity-purified from rabbit anti-serum by affinity-chromatography. |
| Dilution | WB 1:500-1:2000 |
| Range | ELISA 1:20000 |
| Formulation | PBS, 50% Glycerol, 0.5% BSA and 0.02% Sodium Azide. |
| Isotype | IgG |
| Storage | Store at -20°C for up to 1 year from the date of receipt, and avoid repeat freeze-thaw cycles. |
| Instruction | |

TARGET INFORMATION

| | |
|---------------------------|--|
| Gene ID | 57053 |
| Gene Symbol | CHRNA10 |
| Uniprot ID | ACH10_HUMAN |
| Immunogen | The antiserum was produced against synthesized peptide derived from human CHRNA10 at amino acid range 394-443 |
| Immunogen Region | 370-450 C-Term |
| Specificity | CHRNA10 polyclonal antibody (Neuronal Acetylcholine Receptor Subunit Alpha-10) binds to endogenous Neuronal Acetylcholine Receptor Subunit Alpha-10 at the amino acid region 370-450 C-Term. |
| Immunogen Sequence | |



This product is suitable for in-vitro studies under the RESEARCH USE ONLY [RUO] licence. This product must not be used as for diagnostic or other medical purposes.
St John's Laboratory Ltd, Knowledge Dock Business Centre, University Way, London, E16 2RD | Tel: 0208 223 3081