

Anti-CHRNA1 antibody (Internal) (STJ91445)

STJ91445

GENERAL INFORMATION

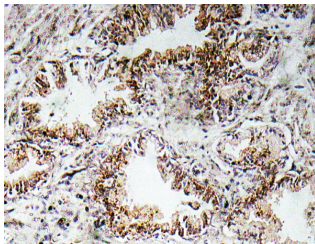
Product Type	Primary antibodies
Short Description	Rabbit polyclonal antibody anti-Acetylcholine Receptor Subunit Alpha (Internal) is suitable for use in Immunohistochemistry, Immunofluorescence and ELISA research applications.
Applications	IHC-P, IF-P, ELISA
Host/Source	Rabbit
Reactivity	Human, Mouse, Rat

PRODUCT PROPERTIES

Clonality	Polyclonal
Clone ID	
Concentration	1 mg/mL
Conjugation	Unconjugated
Purification	The antibody was affinity-purified from rabbit anti-serum by affinity-chromatography.
Dilution Range	IHC 1:100-1:300 ELISA 1:10000
Formulation	PBS, 50% Glycerol, 0.5% BSA and 0.02% Sodium Azide.
Isotype	IgG
Storage	Store at -20°C for up to 1 year from the date of receipt, and avoid repeat freeze-thaw cycles.
Instruction	

TARGET INFORMATION

Gene ID	1134
Gene Symbol	CHRNA1
Uniprot ID	ACHA_HUMAN
Immunogen	The antiserum was produced against synthesized peptide derived from human AChRalpha1 at amino acid range 168-217
Immunogen Region	Internal
Specificity	CHRNA1 polyclonal antibody (Acetylcholine Receptor Subunit Alpha) binds to endogenous Acetylcholine Receptor Subunit Alpha at the amino acid region Internal.
Immunogen Sequence	



Immunohistochemistry analysis of AChR Alpha 1 antibody in paraffin-embedded human prostate carcinoma tissue.