

Anti-ACHE antibody (520-600 C-Term) (STJ91444)

STJ91444

GENERAL INFORMATION

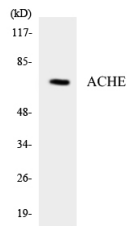
Product Type	Primary antibodies
Short Description	Rabbit polyclonal antibody anti-Acetylcholinesterase (520-600 C-Term) is suitable for use in Western Blot and ELISA research applications.
Applications	WB, ELISA
Host/Source	Rabbit
Reactivity	Human, Mouse, Rat

PRODUCT PROPERTIES

Clonality	Polyclonal
Clone ID	
Concentration	1 mg/mL
Conjugation	Unconjugated
Purification	The antibody was affinity-purified from rabbit anti-serum by affinity-chromatography.
Dilution Range	WB 1:500-1:2000 ELISA 1:5000
Formulation	PBS, 50% Glycerol, 0.5% BSA and 0.02% Sodium Azide.
Isotype	IgG
Storage Instruction	Store at -20°C for up to 1 year from the date of receipt, and avoid repeat freeze-thaw cycles.

TARGET INFORMATION

Gene ID	43
Gene Symbol	ACHE
Uniprot ID	ACES_HUMAN
Immunogen	The antiserum was produced against synthesized peptide derived from human ACHE at amino acid range 551-600
Immunogen Region	520-600 C-Term
Specificity	ACHE polyclonal antibody (Acetylcholinesterase) binds to endogenous Acetylcholinesterase at the amino acid region 520-600 C-Term.
Immunogen Sequence	



Western blot analysis of the lysates from HT-29 cells using ACHE antibody.