

Anti-ACE2 antibody (Internal) (STJ91442)

STJ91442

GENERAL INFORMATION

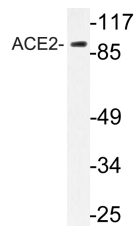
Product Type	Primary antibodies
Short Description	Rabbit polyclonal antibody anti-Angiotensin-Converting Enzyme 2 (Internal) is suitable for use in Western Blot and ELISA research applications.
Applications	WB, ELISA
Host/Source	Rabbit
Reactivity	Human, Mouse

PRODUCT PROPERTIES

Clonality	Polyclonal
Clone ID	
Concentration	1 mg/mL
Conjugation	Unconjugated
Purification	The antibody was affinity-purified from rabbit anti-serum by affinity-chromatography.
Dilution Range	WB 1:500-1:2000 ELISA 1:40000
Formulation	PBS, 50% Glycerol, 0.5% BSA and 0.02% Sodium Azide.
Isotype	IgG
Storage	Store at -20°C for up to 1 year from the date of receipt, and avoid repeat freeze-thaw cycles.
Instruction	

TARGET INFORMATION

Gene ID	59272
Gene Symbol	ACE2
Uniprot ID	ACE2_HUMAN
Immunogen	The antiserum was produced against synthesized peptide derived from human ACE2 at amino acid range 416-465
Immunogen Region	Internal
Specificity	ACE2 polyclonal antibody (Angiotensin-Converting Enzyme 2) binds to endogenous Angiotensin-Converting Enzyme 2 at the amino acid region Internal.
Immunogen Sequence	



Western blot analysis of lysate from HeLa cells, using ACE2 antibody.

This product is suitable for in-vitro studies under the RESEARCH USE ONLY [RUO] licence. This product must not be used as for diagnostic or other medical purposes.
St John's Laboratory Ltd, Knowledge Dock Business Centre, University Way, London, E16 2RD | Tel: 0208 223 3081