

Anti-ACE antibody (Internal) (STJ91441)

STJ91441

GENERAL INFORMATION

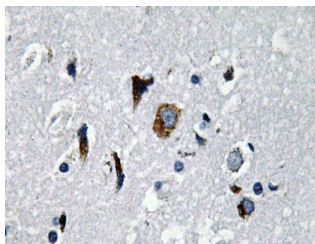
Product Type	Primary antibodies
Short Description	Rabbit polyclonal antibody anti-Angiotensin-Converting Enzyme (Internal) is suitable for use in Western Blot, Immunohistochemistry, Immunofluorescence and ELISA research applications.
Applications	WB, IHC-P, IF-P, ELISA
Host/Source	Rabbit
Reactivity	Human, Mouse, Rat

PRODUCT PROPERTIES

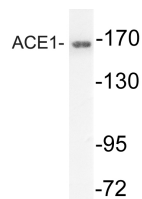
Clonality	Polyclonal
Clone ID	
Concentration	1 mg/mL
Conjugation	Unconjugated
Purification	The antibody was affinity-purified from rabbit anti-serum by affinity-chromatography.
Dilution Range	WB 1:500-1:2000 IHC 1:100-1:300 ELISA 1:10000
Formulation	PBS, 50% Glycerol, 0.5% BSA and 0.02% Sodium Azide.
Isotype	IgG
Storage Instruction	Store at -20°C for up to 1 year from the date of receipt, and avoid repeat freeze-thaw cycles.

TARGET INFORMATION

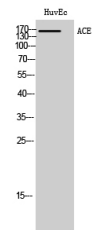
Gene ID	1636
Gene Symbol	ACE
Uniprot ID	ACE_HUMAN
Immunogen	The antiserum was produced against synthesized peptide derived from human ACE1 at amino acid range 891-940
Immunogen Region	Internal
Specificity	ACE polyclonal antibody (Angiotensin-Converting Enzyme) binds to endogenous Angiotensin-Converting Enzyme at the amino acid region Internal.
Immunogen Sequence	



Immunohistochemistry analysis of ACE1 antibody in paraffin-embedded human brain tissue.



Western blot analysis of lysates from mouse kidney, using ACE1 antibody.



Western blot analysis of HuvEc cells using ACE1 Polyclonal Antibody diluted at 1:1000

This product is suitable for in-vitro studies under the RESEARCH USE ONLY [RUO] licence. This product must not be used as for diagnostic or other medical purposes.
St John's Laboratory Ltd, Knowledge Dock Business Centre, University Way, London, E16 2RD | Tel: 0208 223 3081