

Anti-ABHD8 antibody (260-340 Internal) (STJ91428)

STJ91428

GENERAL INFORMATION

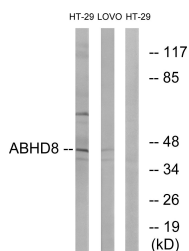
Product Type	Primary antibodies
Short Description	Rabbit polyclonal antibody anti-Protein Abhd8 (260-340 Internal) is suitable for use in Western Blot, Immunohistochemistry, Immunofluorescence and ELISA research applications.
Applications	WB, IHC-P, IF-P, ELISA
Host/Source	Rabbit
Reactivity	Human, Mouse

PRODUCT PROPERTIES

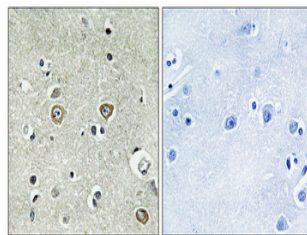
Clonality	Polyclonal
Clone ID	
Concentration	1 mg/mL
Conjugation	Unconjugated
Purification	The antibody was affinity-purified from rabbit anti-serum by affinity-chromatography.
Dilution Range	WB 1:500-1:2000 IHC 1:100-1:300 ELISA 1:40000
Formulation	PBS, 50% Glycerol, 0.5% BSA and 0.02% Sodium Azide.
Isotype	IgG
Storage Instruction	Store at -20°C for up to 1 year from the date of receipt, and avoid repeat freeze-thaw cycles.

TARGET INFORMATION

Gene ID	79575
Gene Symbol	ABHD8
Uniprot ID	ABHD8_HUMAN
Immunogen	The antiserum was produced against synthesized peptide derived from human ABHD8 at amino acid range 291-340
Immunogen Region	260-340 Internal
Specificity	ABHD8 polyclonal antibody (Protein Abhd8) binds to endogenous Protein Abhd8 at the amino acid region 260-340 Internal.
Immunogen Sequence	



Western blot analysis of lysates from HT-29 and LOVO cells, using ABHD8 Antibody. The lane on the right is blocked with the synthesized peptide.



Immunohistochemical analysis of paraffin-embedded Human brain. Antibody was diluted at 1:100 (4°C overnight). High-pressure and temperature Tris-EDTA, pH8.0 was used for antigen retrieval. Negative control (right) obtained from antibody was pre-absorbed by immunogen peptide.