

Anti-EPHX4 antibody (70-150 Internal) (STJ91427)

STJ91427

GENERAL INFORMATION

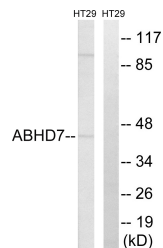
Product Type	Primary antibodies
Short Description	Rabbit polyclonal antibody anti-Epoxyde Hydrolase 4 (70-150 Internal) is suitable for use in Western Blot and ELISA research applications.
Applications	WB, ELISA
Host/Source	Rabbit
Reactivity	Human, Mouse

PRODUCT PROPERTIES

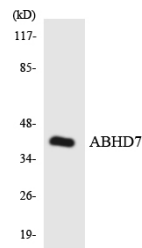
Clonality	Polyclonal
Clone ID	
Concentration	1 mg/mL
Conjugation	Unconjugated
Purification	The antibody was affinity-purified from rabbit anti-serum by affinity-chromatography.
Dilution Range	WB 1:500-1:2000 ELISA 1:40000
Formulation	PBS, 50% Glycerol, 0.5% BSA and 0.02% Sodium Azide.
Isotype	IgG
Storage Instruction	Store at -20°C for up to 1 year from the date of receipt, and avoid repeat freeze-thaw cycles.

TARGET INFORMATION

Gene ID	253152
Gene Symbol	EPHX4
Uniprot ID	EPHX4_HUMAN
Immunogen	The antiserum was produced against synthesized peptide derived from human ABHD7 at amino acid range 101-150
Immunogen Region	70-150 Internal
Specificity	EPHX4 polyclonal antibody (Epoxyde Hydrolase 4) binds to endogenous Epoxyde Hydrolase 4 at the amino acid region 70-150 Internal.
Immunogen Sequence	



Western blot analysis of lysates from HT-29 cells, using ABHD7 Antibody. The lane on the right is blocked with the synthesized peptide.



Western blot analysis of the lysates from HeLa cells using ABHD7 antibody.



Western blot analysis of various cells using ABHD7 Polyclonal Antibody diluted at 1: 500

This product is suitable for in-vitro studies under the RESEARCH USE ONLY [RUO] licence. This product must not be used as for diagnostic or other medical purposes.
St John's Laboratory Ltd, Knowledge Dock Business Centre, University Way, London, E16 2RD | Tel: 0208 223 3081