

Anti-ABHD2 antibody (220-300 Internal) (STJ91424)

STJ91424

GENERAL INFORMATION

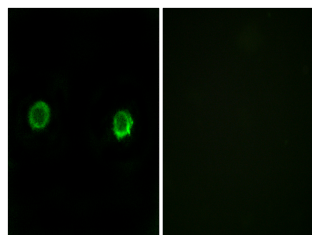
Product Type	Primary antibodies
Short Description	Rabbit polyclonal antibody anti-Monoacylglycerol Lipase Abhd2 (220-300 Internal) is suitable for use in Western Blot, Immunofluorescence, Immunocytochemistry and ELISA research applications.
Applications	WB, IF, ICC, ELISA
Host/Source	Rabbit
Reactivity	Human, Mouse

PRODUCT PROPERTIES

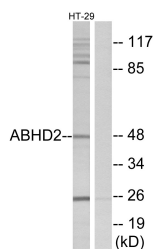
Clonality	Polyclonal
Clone ID	
Concentration	1 mg/mL
Conjugation	Unconjugated
Purification	The antibody was affinity-purified from rabbit anti-serum by affinity-chromatography.
Dilution Range	WB 1:500-1:2000 IF 1:200-1:1000 ELISA 1:40000
Formulation	PBS, 50% Glycerol, 0.5% BSA and 0.02% Sodium Azide.
Isotype	IgG
Storage Instruction	Store at -20°C for up to 1 year from the date of receipt, and avoid repeat freeze-thaw cycles.

TARGET INFORMATION

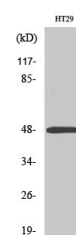
Gene ID	11057
Gene Symbol	ABHD2
Uniprot ID	ABHD2_HUMAN
Immunogen	The antiserum was produced against synthesized peptide derived from human ABHD2 at amino acid range 251-300
Immunogen Region	220-300 Internal
Specificity	ABHD2 polyclonal antibody (Monoacylglycerol Lipase Abhd2) binds to endogenous Monoacylglycerol Lipase Abhd2 at the amino acid region 220-300 Internal.
Immunogen Sequence	



Immunofluorescence analysis of MCF-7 cells, using ABHD2 Antibody. The picture on the right is blocked with the synthesized peptide.



Western blot analysis of lysates from HT29 cells, using ABHD2 Antibody. The lane on the right is blocked with the synthesized peptide.



Western blot analysis of various cells using ABHD2 Polyclonal Antibody